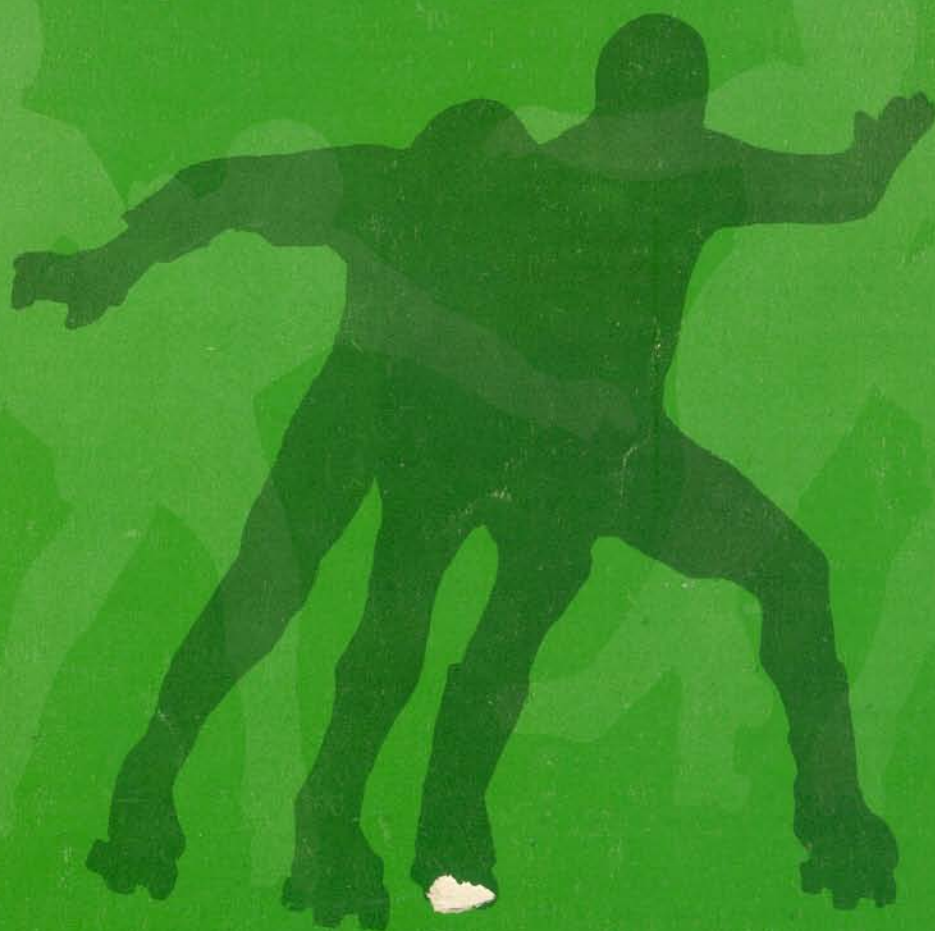


**ROLLER DERBY**

# 1000

**YEARBOOK**



75¢

# ★ New Official Roller Derby Rules and Regulations ★

The GAME consists of two halves, each half has four alternating 12-minute periods of boys and girls.

A TEAM is composed of five boys and five girls. Only five members of each team can be on the track at one time.

GAME STARTS when the referee signals by blowing his whistle that the two teams are equally in position. This group is called the pack. In this pack are BLOCKERS (solid helmets) and JAMMERS (striped helmets).

A JAM (scoring play) is when one or more jammers have pulled away from the pack. The jammers have 90 seconds to score. A jammer must wear a striped helmet. The blocker, who cannot score, wears a solid colored helmet. A jam can start:

1. When the referee has signaled that both teams are in the pack.
2. When there is one blocker of each team evenly together at the front of the pack.
3. When all jammers are at the rear of the pack.

The clock and the jam actually start when one of the jammers has been able to pass the leading opposing blocker in the pack.

Helmets must be worn by the jammers to score, unless through some involuntary action the helmet is knocked off, then the referee has the right to decide on this point.

A jam will be considered at an end for any of the following reasons:

1. The expiration of the 90-second time limit.
2. At the conclusion of each 12-minute skating period.
3. When the lead jammer places both hands on his or her hips.
4. A jam may also be called off by the officials for any emergency.

A jammer receives one point for every member of the opposing team he or she passes, every time he or she laps the field within 90 seconds.

There are various two- and five-minute PENALTIES that may force a team to skate shorthanded. See detailed rules below.

## RULE 1 — GENERAL

A. Each game shall be divided into two halves of four 12-minute periods each.

B. The clock shall run continuously except:

1. In cases of official time-outs.
2. One one-minute time out is allowed each team per period.

In the above cases the clock shall resume when play is officially started by an official's whistle.

C. A jam can start when one of the jammers has been able to pass the leading opposing blocker in the pack.

D. The time limit for all jams shall be of ninety (90) seconds duration as regulated on the official clock.

E. There must be one blocker from each team in equal position at the front of the pack.

F. The jammers must break from the back of the pack.

G. Blockers and jammers cannot exchange helmets during a jam.

H. Striped helmets are worn by jammers, solid colored helmets are worn by blockers.

## RULE 2 — SCORING

A. Points are scored as follows:

1. A jammer receives one point for every member of the opposing team he or she passes, every time he or she laps the field within 90 seconds.

B. If a blocker commits a foul on a jam skater, the jam skater will be awarded the point that he or she is attempting to score.

C. A skater forced into the infield may not better the position he was in when he left the track.

D. A skater receiving a penalty becomes ineligible to either score or be scored on.

E. A fouled skater cannot be passed for a point unless he or she has had sufficient time to recover from the foul.

F. No jam can be considered a legal jam with more than five skaters on the track from each team.

G. A skater with skate trouble cannot be passed for a point.

## RULE 3 — REPLACEMENTS

A. When one skater replaces a teammate he or she must report to the official scorer and then make contact with the skater he or she is replacing and join the pack.

B. An injured skater can be replaced at any time.

C. A skater replacing a teammate who has skate trouble must rejoin the field within one lap of the replacement.

## RULE 4 — CONCLUDING A JAM

A. A jam will be considered at an end for any of the following reasons:

1. The expiration of the ninety (90) second time limit.
2. At the conclusion of each twelve (12) minute skating period.
3. By the leading jam skater placing both hands on his or her hips.

B. A jam may be called off by the officials at any time for any emergency.

## RULE 5 — PENALTIES

A. There will be two penalties, a major (five minutes) and a minor (2 minutes).

B. A minor penalty will be of two minutes duration and will be called at the discretion of the referee for holding, illegal blocking, stalling, tripping, illegal use of the hands, and other minor fouls.

C. A major penalty will be of five minutes duration, and will be called at the discretion of the referee for fighting and intentional roughness, deliberate railing, deliberate and excessive insubordination, and gross unsportsmanlike conduct.

D. A major penalty calling for expulsion from the game will be called at the discretion of the referee.

1. If a player is ejected from the game, his or her team receives a five-minute penalty.

E. If a penalized skater does not leave the track immediately or interferes with the remainder of the field, he will receive an additional two-minutes penalty.

F. If a skater's penalty time overlaps into the following period, ANY member of the opposite sex taking the track must serve out the balance of the penalty time.

G. No more than two players on any team can be in the penalty box at one time. If a third player or more is penalized, the player or players committing the penalty must leave the track and be replaced by a substitute. The penalized skater will begin serving his penalty time when one of the skaters in the penalty box returns to the track. At such time, the substitute will return to the bench.

## RULE 6 — BANISHMENT

A. If any player accumulates a total of four penalties or eight minutes in penalties during one game he or she is automatically ruled out of the game and his or her substitute will spend the time of the last penalty in the penalty box.

## RULE 7 — BLOCKING

A. A player may block an opponent with any part of his or her body with the following exceptions:

1. It is illegal to use any part of the arm below the elbow.
2. It is illegal for a skater to block with his feet or trip an opponent.
3. In using arms for blocking purposes, the arm must be BENT, not extended full length.
4. It is illegal to block from the rear.

B. Elbows may be used in blocking, but not in the following manner:

1. A skater is not permitted to use an elbow block above the shoulders.
2. A skater is not permitted to use an elbow with an upward or downward motion.

C. In setting up a double block, it is illegal for the defensive skaters to grip hands or lock arms. Both blockers may receive a penalty at the discretion of the officials.

D. Other forms of illegal blocking may be called at the discretion of the officials.

E. No defensive skater will be permitted to drop back more than a distance of twenty (20) feet behind the pack to attempt to block a jammer. A two minute (minor) penalty may be called by the official.

F. All skating must be in a counter-clockwise direction.

## RULE 8 — OVERTIME

A. There can be no tie games. If at the end of the eighth period the score is tied, the game will go into overtime in the following manner:

1. The girls and boys will alternate five-minute skating periods until a point is scored. The team scoring the first point will be declared the winner.

## RULE 9 — PROTESTS

A. Any coach has the right to protest a game by submitting said protest in writing within 48 hours after game has been concluded to Roller Derby League headquarters.

## RULE 10 — REFEREES

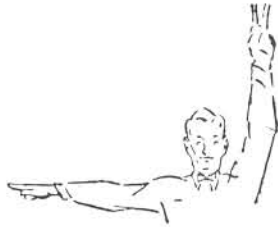
On any disputed point that is not clearly spelled out in these rules, a consensus of the referees will have the final decision.



## REFEREE'S SIGNALS



NO SCORE



POINTS SCORED



JAM CALLED OFF



JAM OFF —  
SKATER INTO INFIELD



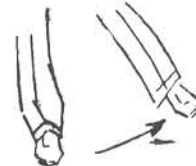
DELAYING GAME



SLUGGING



KNEEING



TRIPPING



INSUBORDINATION



PUSHING



HOLDING



UNNECESSARY ROUGHNESS



ILLEGAL BLOCKING

**IDEAL  
GIFT**

BUY THE SKATES OF  
THE CHAMPIONS—

Tested for Perfection  
under the Most Rug-  
ged Conditions Pos-  
sible on the Roller  
Derby Banked Track

Cushioned to the  
skater's weight,  
perfectly balanced,  
specially adjustable to  
fit any style  
skating



DOUBLE CUSHION Official Roller  
Derby Rink Skates

**THE TOPS!**

OFFICIAL

**ROLLER DERBY**

RINK SKATES

Trade Mark Reg. U.S. Pat. Off.



**IDEAL  
GIFT**

STREET KING—  
America's First Side-  
walk Shoe Skate In  
White and Black for  
Boys and Girls

All Major Department Stores, Sporting  
Goods Dealers and Roller Rinks from  
**COAST TO COAST**



STREET KING Sidewalk Ball Bear-  
ing Roller Skates with Shoes  
Attached

No Clamps  
No Screws  
No Keys

SIZES FOR  
ALL

**\$5.95**

&

**\$6.95**

**RINK SKATES**

**STREET KING**

SIDEWALK BALL BEARING ROLLER SKATES WITH SHOES ATTACHED

# AN OPEN LETTER TO ALL ROLLER DERBY TRAINEES

From

Gene Gammon: Coach, New York Chiefs

&

Bill Laurino: Coach, Hollywood Stars

No one knows better than a coach the importance of a well-balanced lineup. To stay on top in this competitive Roller Derby league, a team must possess a blend of youth and experience. A coach must build not only for today, but for the years to come. He must have skaters to replace today's stars, and tomorrow's greats can come from only one place - the Roller Derby training schools.

Roller Derby skaters are made, not born, and from the training schools on the East and West Coasts, as well as Chicago, have come some of the brightest hopes for the future of the banked track sport.

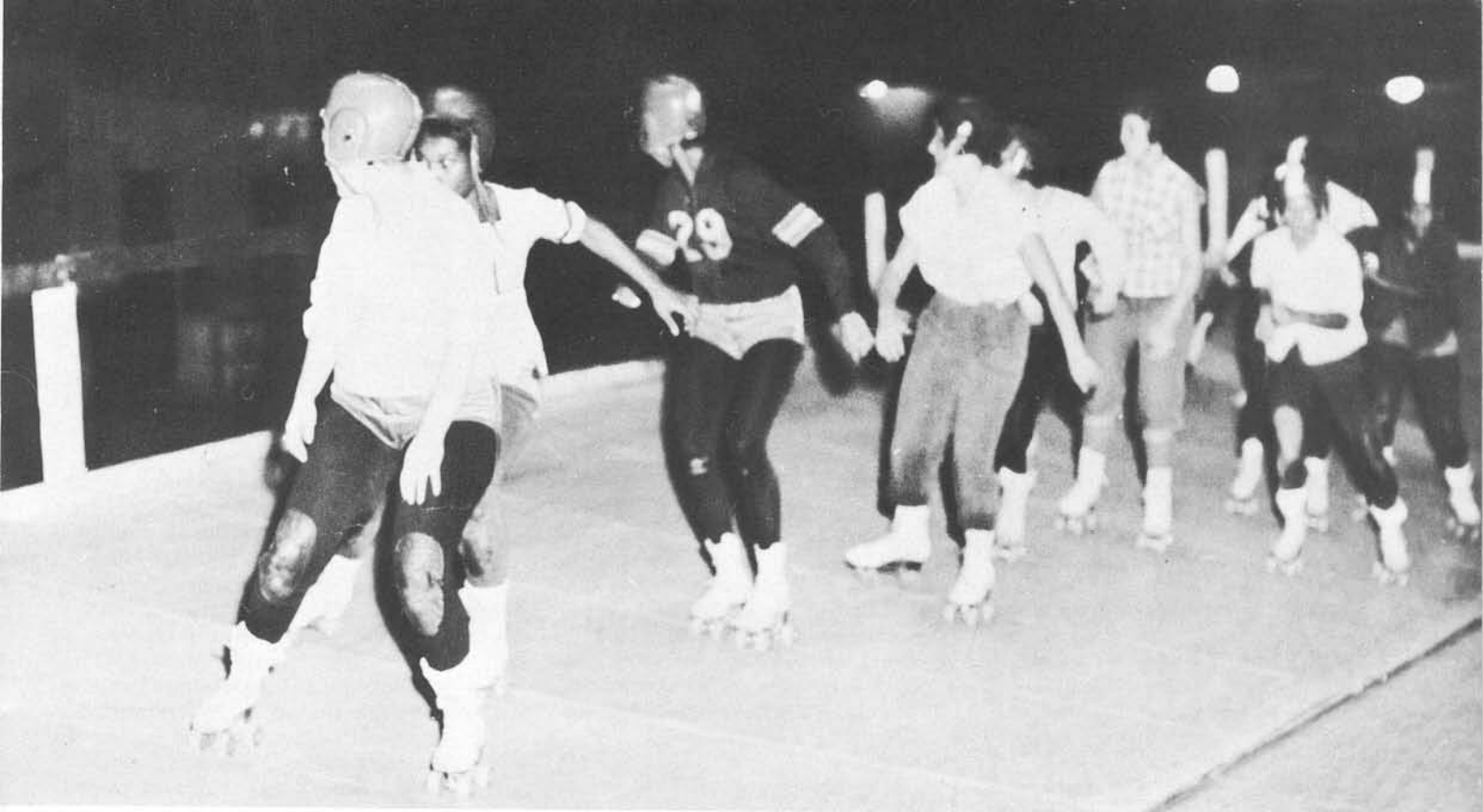
Since the start of the 1959-60 season, skaters like Emily Levinger, Margie Laszlo, Carol Paulson, Sandy Morse, Carol Phillips, Peggy Healy, Bob Woodberry, Jim Nolan, Dave Price, Tony Roman, Richie Preti, Bob Hein, Richie Fleischmann, Al Dube and Don David have progressed from green rookies to skaters with a good solid skate foot in the door of Roller Derby's future. In the scoring columns and the time trials, these youngsters are more than holding their own with the seasoned veterans.

And the success of these youngsters has further encouraged the trainees who are still trying to make the grade. Youngsters with the heart, spirit, determination and the physical stamina to become skaters, are developing in the training schools under the guidance of such all-time Roller Derby greats as Gerry Murray, Hal Janowitz and Charlie O'Connell. Here they not only develop conditioning, but are taught how to properly skate the banked track, how to pace and block, and all the finer points of the game.

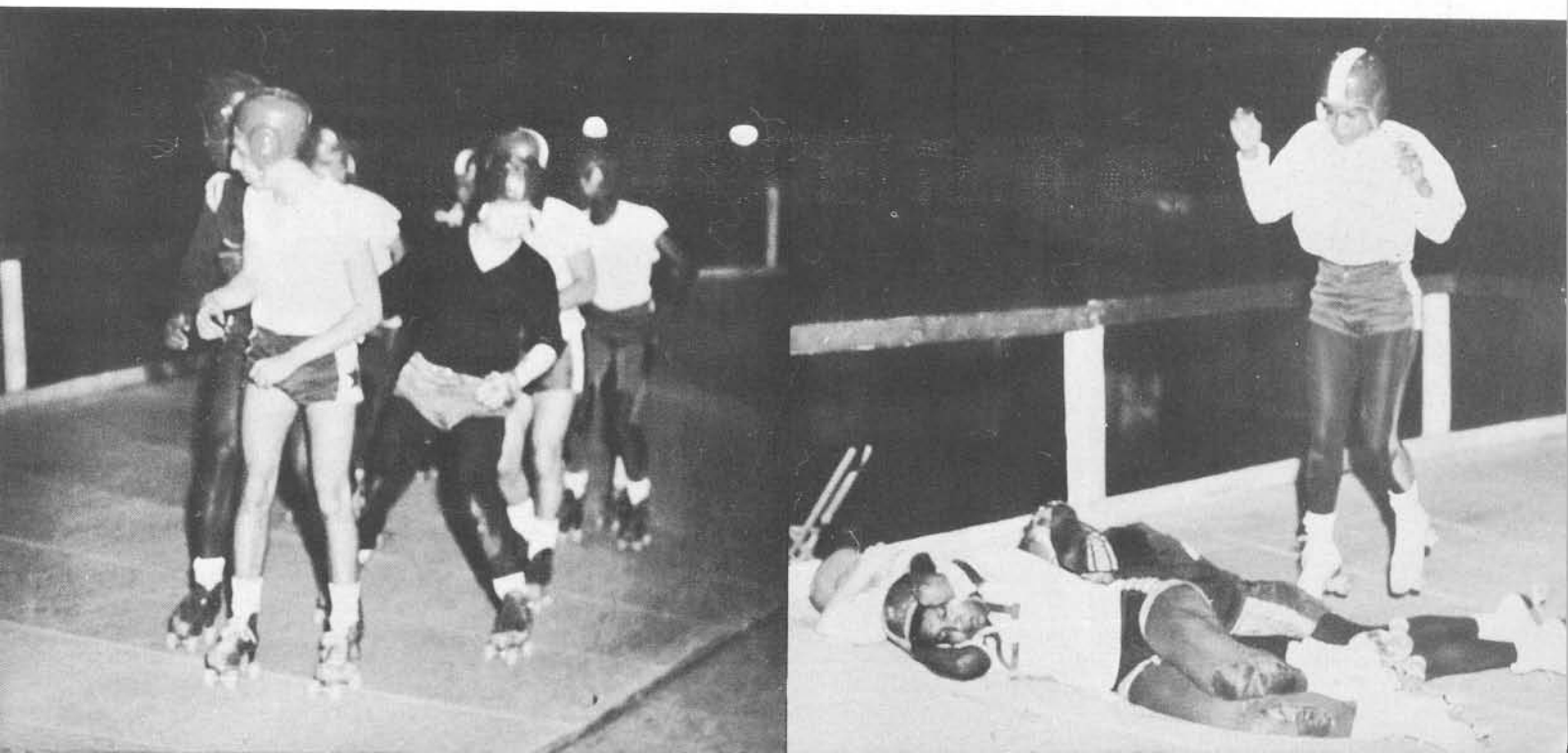
In the New York training school, JoAnn Kemner, Cathie Greenberg, Carol Mueller, Helen Fleischhauer, Cathie DeMarco, Jo Burton, Pat Carney, Salvino Cosme, Tom Carras, and Joe Buffalino are among the most promising of the trainees who should soon be ready for the pro ranks.

And unlike other professional sports, like football and basketball, where size is a determining factor, in Roller Derby there is room for the small man or girl to make good.

To enter a Roller Derby training school all that is required is a pair of skates and a release. The doors are open to all those sincerely interested in a skating career, who are not afraid of hard work, and hard falls. From the ranks of the fledglings training now, and those who will enter these schools in the months to come, will emerge the future of Roller Derby.



# **YOUR FAVORITE SPORT**





**BERT WALL**

Coach, Los Angeles Braves . . . 5'6" . . . 155 lbs. . . . Born, San Francisco, Calif., May 13, 1927 . . . Joined Roller Derby in San Francisco, Calif., March, 1940 . . . Was in 82nd Airborne Division during World War II . . . Won California Flat Track Speed championship three years in row before joining Derby . . . Also skated for Chiefs, Westerners, and Jolters . . . Coached Jolters and Westerners . . . All-star selection several times . . . Won scoring title in 1954 and scored 44 points in '54 World Series to tie record . . . Had three five-pointers in one period against Red Devils in '56 . . . Managed drive-in restaurant . . . Hobby is swimming.

**KEN MONTE**

Coach, Brooklyn Red Devils . . . 5'11" . . . 190 lbs. . . . Born, Wauwatoma, Wisc., June 16, 1929 . . . Joined Roller Derby in Chicago, Ill., April, 1945 . . . Also skated for Westerners and Jolters . . . Has done construction work . . . Married to Midge "Toughie" Brasuhn.

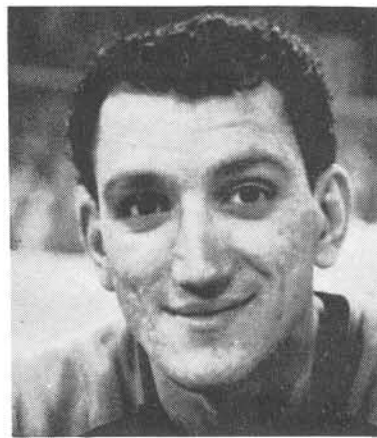


**HAL JANOWITZ**

Coach, Chicago Westerners . . . 5'11" . . . 170 lbs. . . . Born, Minneapolis, Minn., June 22, 1926 . . . Joined Roller Derby in Minneapolis, Minn., August, 1938 . . . Spent three-and-half years in U. S. Navy . . . Also skated for Chiefs, Panthers, Jolters and Clippers.

**CHARLIE O'CONNELL**

Coach, San Francisco Bombers . . . 6'1" . . . 185 lbs. . . . Born, New York, N. Y., May 7, 1934 . . . Joined Roller Derby in New York, N. Y., October, 1952 . . . Also skated for Chiefs, Westerners and Jolters . . . Rookie-of-the-Year in 1953 . . . Holds record for fastest mile in Derby . . . Skated in Junior RD . . . Has been all-star selection several times.



**BILL LAURINO**

Coach, Hollywood Stars . . . 6' . . . 170 lbs. . . . Born, Chicago, Ill., April 7, 1931 . . . Joined Roller Derby in Chicago, Ill., April, 1951 . . . Played football and basketball in high school . . . Managed a drug store before joining Derby . . . Also skated for Westerners, Red Devils, Clippers, and Bombers . . . Coached both Red Devils and Bombers . . . Hobbies are singing and collecting records.

## *Meet The Coaches*

**GENE GAMMON**

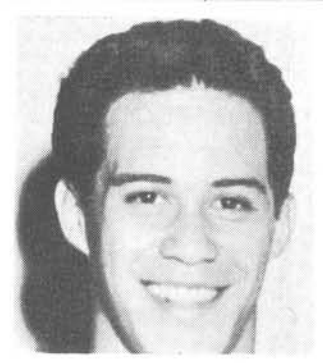
Coach, New York Chiefs . . . 6'1" . . . 210 lbs. . . . Born, Terre Haute, Indiana, May 22, 1922 . . . Joined Roller Derby in Columbus, Ohio, October, 1940 . . . Retired as active skater in November, 1959 . . . Skated for Chiefs, Braves and Westerners . . . Coached Westerners . . . Spent two years in Marine Corps . . . Derby injuries include broken leg, shoulder and both wrists . . . Led men in 1951 all-star voting . . . Favorite pastime is fishing.







ANDERSON



FREDDIE NOA

# MODERN ROLLER DERBY COACHING RECORDS (1949 through 1959 Season)

COACH	TEAM	YEAR
Anderson, Elmer	Panthers	1949-51
	Westerners	1952
Atkinson, Buddy	Panthers	1951
	Chiefs	1957-59
	Jolters	1951-52
Atkinson, Tommy	Westerners	1954
	Bombers	1958
	Westerners	1949
Aronson, Wes	Red Devils	1949
Baker, Russ	Westerners	1950
	Bombers	1954
	Jolters	1951
Bogash, Billy	Chiefs	1949-51; 1953-54
	Braves	1954-57
Cazar, Johnny	Bombers	1954
Ciota, Jim	Jolters	1957-58
	Red Devils	1958-59
Cohen, Fred	Chiefs	1952
Davis, Chuck	Bombers	1958
Dowdell, Austin	Westerners	1950
	Red Devils	1952
	Chiefs	1952-53
Gammon, Gene	Westerners	1957
	Red Devils	1954
Illies, Jules	Westerners	1958-59
Janowitz, Hal	Clippers	1956-57
	Clippers	1956
Lewis, Don	Red Devils	1958
Laurino, Bill	Panthers	1953
Massro, Russ	Braves	1957-58; 1959
	Westerners	1951; 1952-53
Monte, Ken	Red Devils	1949-50; 1953; 1957-58
Noa, Fred	Westerners	1954
Karp, Johnny	Jolters	1951
Koudounas, George	Westerners	1957
O'Connell, Charlie	Bombers	1958-59
Payne, Carl	Jolters	1950; 1952-53
	Red Devils	1952-53
Reynolds, Bill	Bombers	1955-58
	Jets	1949-50
Rich, Silver	Jets	1951
Saunders, Spec	Chiefs	1952-53
Schroeder, Roger	Red Devils	1958
	Panthers	1953
Skobel, Sam	Red Devils	1951
Satterfield, Bob	Westerners	1950
Smartt, Red	Braves	1953-54
Vogt, George	Ravens	1954
	Panthers	1953
Venter, Bob	Red Devils	1953
	Ravens	1957-58
Wall, Bert	Chiefs	1954-57
	Braves	1958
Langley, Roy	Jolters	1954
	Jolters	1952
Harnesk, Sid	Jets	1951
	Westerners	1952



GEORGE VOGT



KEN MONTE



**SHARON STEVENS**

Los Angeles Braves . . . 5'6" . . . 130 lbs. . . Born, Wind Springs, Okla., January 24, 1939 . . . Joined Roller Derby in Los Angeles, Calif., January, 1958 . . . Won International Ladies and Mixed Relay championships of Roller Skating Rink Operators Ass'n., in 1955 . . . Played baseball and basketball . . . Turned in fastest quarter mile in Eastern time trials, January, 1960 . . . Hobbies are swimming and water skiing.



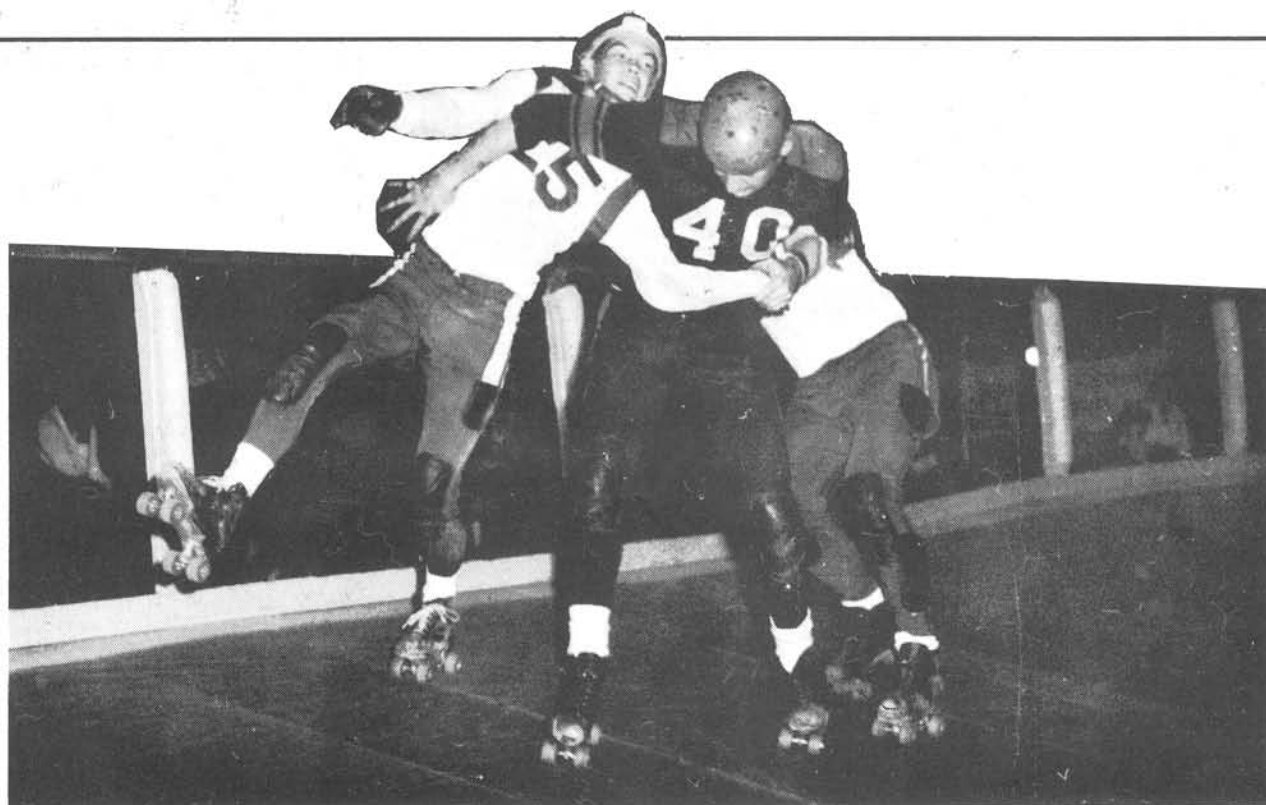
**JAN VALLOW**

Brooklyn Red Devils . . . 5'6" . . . 130 lbs. . . Born, Colorado Springs, Colo., September, 1940 . . . Joined Roller Derby in Los Angeles, Calif., June 1958 . . . Also skated with Chiefs and Braves . . . Rookie-of-the-Year in 1959 . . . Broke leg in January, 1960.



**MIDGE "TOUGHIE" BRASUHN**

Brooklyn Red Devils . . . 4'11" . . . 150 lbs. . . Born, St. Paul, Minn., January 17, 1924 . . . Joined Roller Derby in Minneapolis, Minn., May, 1941 . . . Married to Ken Monte and has one son . . . Returning to Derby after a two year absence . . . Member of the Roller Derby Hall of Fame . . . M.V.P. in 1949 World Series . . . Led all-star balloting in 1951 with record 67,241 votes . . . Injuries include loss of four teeth, broken ankle, two broken collarbones and eight broken noses.



**A PENALTY COMING UP**

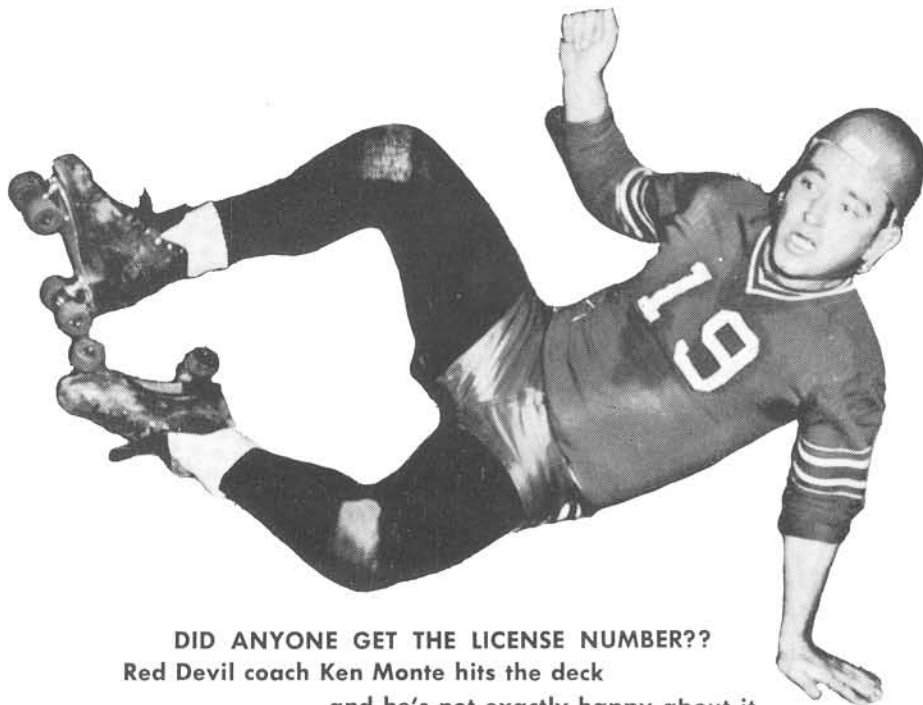
Bomber coach Charlie O'Connell fouled New York's Mike Gammon and drew a two minute sentence for his troubles. That's Pete Mangone trying to help Mike pass Charlie.





#### SHARON ALSOP

Chicago Westerners . . . 5'2" . . . 130 lbs. . . Born, Indianapolis, Ind., December 27, 1939 . . . Joined Roller Derby in Los Angeles, Calif., June, 1956 . . . Rookie-of-the-Year in 1957 . . . Also skated for Braves . . . Hobbies are sewing, bowling and going to movies . . . Did flat track skating before joining Derby.



**DID ANYONE GET THE LICENSE NUMBER??**  
Red Devil coach Ken Monte hits the deck  
and he's not exactly happy about it.



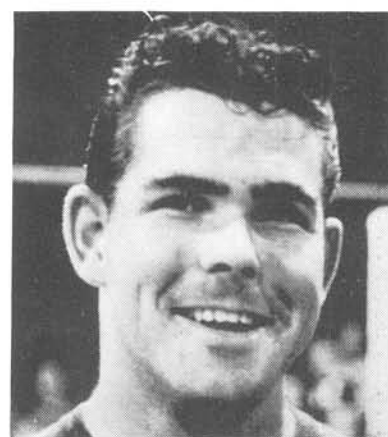
#### BETTY RADAR

Hollywood Stars . . . . . Joined Roller Derby in Los Angeles, Calif., February, 1958 . . . Also skated for Braves and Bombers . . . Hobby is sewing.



#### RICHIE FLEISCHMANN

New York Chiefs . . . 5'6" . . . 145 lbs. . . Born, Rahway, N. J., July 8, 1940 . . . Joined Roller Derby in New York, N. Y., October, 1959 . . . Now lives in Queens, N. Y. . . . Hobbies are painting and collecting records.



#### DAVE POUND

Chicago Westerners . . . 6' . . . 178 lbs. . . Born, Los Angeles, Calif., June 3, 1937 . . . Joined Roller Derby in San Diego, Calif., September, 1955 . . . Also skated for Chiefs.



#### CAROL PAULSON

San Francisco Bombers . . . 5'2" . . . 122 lbs. . . Born, San Francisco, Calif.



#### HARRY KRUEGER

San Francisco Bombers . . . 5'4" . . . 125 lbs. . . Born, San Francisco, Calif.



#### Gene Kluklovsky

Los Angeles Braves . . . 6'2" . . . 165 lbs. . . Born, Los Angeles, Calif.



#### GIL OROZCO

Los Angeles Braves . . . 5'6" . . . 135 lbs. . . . Born, Los Angeles, Calif., June 8, 1939 . . . Joined Roller Derby in Los Angeles, Calif., June, 1956 . . . Rookie-of-the-Year in 1957 . . . Played football . . . Also skated with Clippers and Westerners . . . Hobby is tinkering with cars . . . Scored 33 points, 20 in one period, in exhibition game in Tokyo, Japan, November 11, 1956.



#### EMILY LEVINGER

New York Chiefs . . . 5'6" . . . 110 lbs. . . . Born, Bronx, N. Y., May 16, 1942 . . . Joined Roller Derby in New York, N. Y., October, 1959 . . . Collects records . . . Attends Evander Childs High School and will be graduated this June.



#### FRANK MACEDO

Chicago Westerners . . . 5'6" . . . 130 lbs. . . . Born, New York, N. Y., November 20, 1936 . . . Joined Roller Derby in Charlotte, N. C., June, 1958 . . . Also skated for Red Devils and Jolters . . . Was third in 1959 rookie-of-the-year voting . . . Plays handball . . . Hobby is collecting records.



#### HEADING FOR A ROUGH LANDING

Ann Calvello of San Francisco knows where she's going—down—after a hard block by Chicago's Joan Weston.



#### GERRY MURRAY

New York Chiefs . . . 5'4" . . . 130 lbs. . . . Born, Des Moines, Iowa, September 30, 1920 . . . Joined Roller Derby in Omaha, Neb., September, 1938 . . . Voted into Roller Derby Hall of Fame in 1956 . . . Has also skated for Westerners, Clippers and Bombers . . . Holds banked track record for women for quarter and half mile . . . R.D. Queen, 1951, 1959 and 1960 . . . Scored 54 five-pointers in 1952 . . . All-star selection eight times . . . Scored 20 points in single game for girls' record . . . Played softball before joining Derby.



**PEGGY CONLON**

Free Agent . . . 5'6" . . . 144 lbs. . . . Born, Woodside, N. Y., June 1, 1934 . . . Joined Roller Derby in Passaic, N. J., October, 1952 . . . Likes all sports and roots for all New York teams (Yankees, Knicks and Rangers) . . . Skated flat track before joining Derby . . . Hobby is collecting records.



**PAT BRUNS**

Los Angeles Braves . . . 5'2" . . . 130 lbs. . . . Born, Los Angeles, Calif., June 15, 1940 . . . Joined Roller Derby in Los Angeles, Calif., June, 1956 . . . Also skated for Bombers . . . Hobby is horse-back riding.



**JOAN WESTON**

Chicago Westerners . . . 5'9" . . . 135 lbs. . . . Born, Los Angeles, Calif., January 20, 1935 . . . Joined Roller Derby in Los Angeles, Calif., January, 1955 . . . Also skated for Braves, Chiefs and Panthers . . . Roller Derby Queen in 1958 . . . Captain of the Westerners' girls team . . . An all-star selection the last four seasons.



**PETE MANGONE**

New York Chiefs . . . 5'8" . . . 140 lbs. . . . Born, Bronx, N. Y., May 10, 1939 . . . Joined Roller Derby in New York, N. Y., January, 1958 . . . Rookie-of-the-Year in 1958 . . . U.S. Speed skating champion in 1956 . . . Had operation on nose and wears special protective mask while skating.



**BUDDY ATKINSON, JR.**

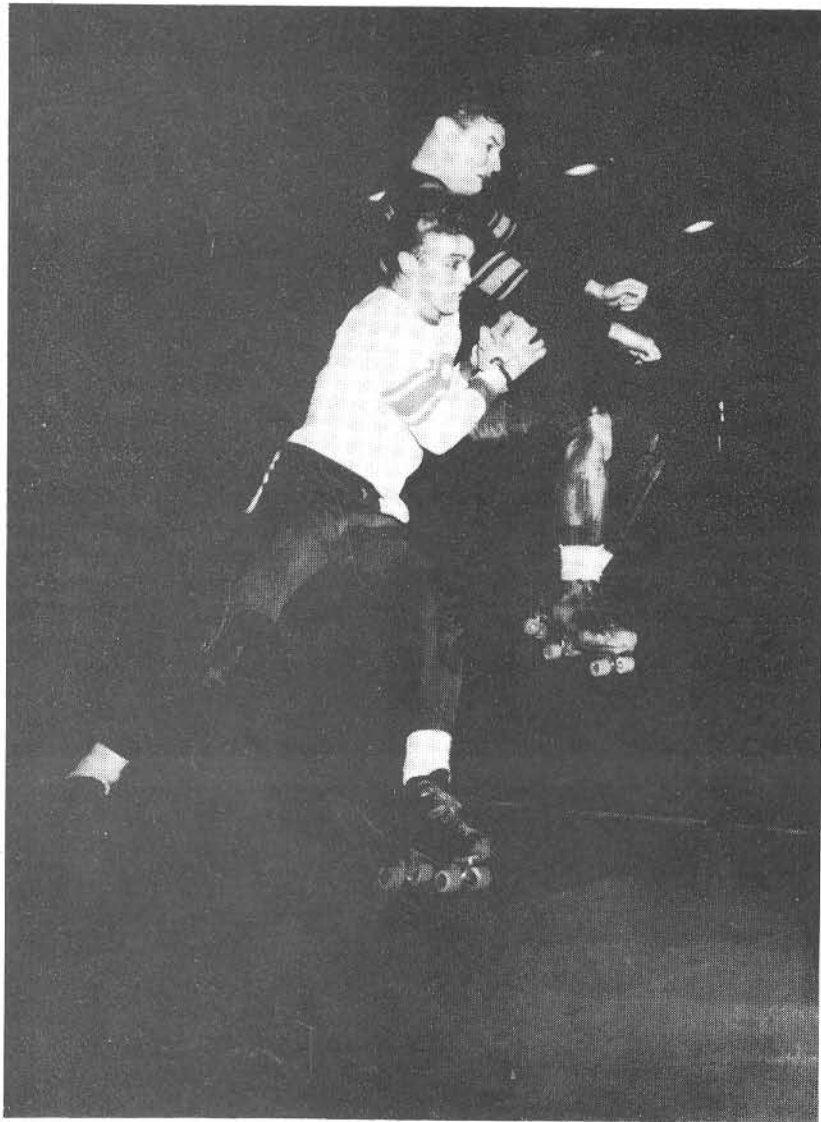
New York Chiefs . . . 5'11" . . . 177 lbs. . . . Born, Los Angeles, Calif., June 26, 1941 . . . Joined Roller Derby in Los Angeles, June, 1958 . . . His father, Buddy Atkinson, Sr., and mother, Bobbie Johnstone, are former Roller Derby stars . . . Skated in Diaper Derby against Mike Gammon at age of seven . . . Hobby is photography.



**JIM NOLAN**

Chicago Westerners . . . 5'9" . . . 148 lbs. . . . Born Washington, D. C., January 1, 1934 . . . Joined Roller Derby in Chicago, Ill., October, 1959 . . . Played football and baseball in high school . . . Did flat track skating before joining Derby.





#### WHAT GOES UP HAS TO COME DOWN

Charlie O'Connell of the Bombers puts the axiom to good use against Billy Gardner of the Chiefs in West Coast action last Summer.

**JOEL RABIN**  
New York Chiefs . . . 5'9" . . . 152 lbs. . . . Born, Hollywood, Fla., January 29, 1932 . . . Joined Roller Derby in New York, N. Y., May, 1959 . . . Also skated for Braves and Bombers . . . Played football in high school . . . Is a licensed pilot . . . Attended N. Y. Institute of Chiropractic and is a chiropractor . . . Hobby is photography.



#### SANDRA MORSE

New York Chiefs . . . 5'4" . . . 128 lbs. . . . Born, New York, N. Y., April 4, 1932 . . . Joined Roller Derby in New York, N. Y., January, 1960 . . . Hobby is collecting records. Also skated for Red Devils.



#### HARLEAN KHEIN

Los Angeles Braves . . . 5' . . . 104 lbs. . . . Born, San Gabriel, Calif., January 27, 1941 . . . Joined Roller Derby in Los Angeles, Calif., October, 1958 . . . Also skated for Westerners and Bombers.



#### RICHIE PRETI

Chicago Westerners . . . 5'8" . . . 161 lbs. . . . Born, Bronx, N. Y., November 24, 1935 . . . Joined Roller Derby in New York, N. Y., January, 1960 . . . Worked as mail clerk . . . Hobby is radios. Also skated for Red Devils.



#### GINNEE LYNCH

New York Chiefs . . . 5'3" . . . 110 lbs. . . . Born, New York, N. Y., August 8, 1939 . . . Joined Roller Derby in New York, N. Y., November, 1958 . . . Has also skated with Red Devils, Westerners and Bombers . . . Was bank teller before joining Derby . . . Hobbies are painting and collecting records.



#### DAVE BATTERSBY

Hollywood Stars . . . 6'2" . . . 170 lbs. . . . Born, Brooklyn, N. Y., July 17, 1938 . . . Joined Roller Derby in New York, N. Y., February, 1958 . . . Also skated for Westerners and Braves.



#### BOB WOODBERRY

New York Chiefs . . . 6'1" . . . 175 lbs. . . . Born, Jacksonville, Fla., October 28, 1940 . . . Joined Roller Derby in New York, N. Y., January, 1960 . . . Played basketball in high school . . . Worked as electrician.



#### MIKE GAMMON

New York Chiefs . . . 5'6" . . . 125 lbs. . . . Born, Milwaukee, Wisc., November 2, 1941 . . . Joined Roller Derby in Pasadena, Calif., July, 1958 . . . Also skated with Red Devils . . . Rookie-of-the-Year in 1959 . . . His mother is Gerry Murray . . . Currently the leading scorer in Derby.



#### HOLD ON THERE!

Braves' Bobbie Mateer can't make it past the blocking of Stars' Jean Porter.



#### JOE FOSTER

San Francisco Bombers . . . 5'11"  
 . . . 175 lbs. . . Born, Santa Cruz,  
 Calif., . . . Joined  
 Roller Derby in San Francisco,  
 June, 1955 . . . Won National Flat  
 Track title in 1954 and 1955 . . .  
 Hopes to become an IBM me-  
 chanic when skating days are  
 over . . . Hampered by bad back  
 . . . Hobby is water skiing.



#### JUDY MCGUIRE

Born, Peakskill, N. Y.  
 5'  
 Joined Roller Derby in New  
 York, N.Y.



#### JIM CIOTA

Brooklyn Red Devils . . . 5'10" . . .  
 162 lbs. . . Born, Brooklyn, N. Y.,  
 January 20, 1932 . . . Joined Rol-  
 ler Derby in New York, N. Y.,  
 March, 1953 . . . Also skated for  
 Westerners, Jolters, and Braves  
 . . . Coached Red Devils and Jol-  
 ters . . . In Army two years . . .  
 Hobbies are collecting records  
 and building miniature cars.



#### CAROL PHILLIPS

Chicago Westerners . . . 5'3" . . .  
 125 lbs. . . Born, Virgin Islands,  
 October 11, 1941 . . . Joined Rol-  
 ler Derby in New York, N. Y.,  
 January, 1960 . . . Worked as  
 mail clerk . . . Likes swimming  
 and basketball . . . Also skated  
 for Red Devils.

#### BILL BOBO

Los Angeles Braves . . . 5'10" . . .  
 180 lbs. . . Born, Hartford, In-  
 diana, September , 1934 . . .  
 Joined Roller Derby in  
 . . . Also skated for Red Devils,  
 Chiefs and Clippers . . . Wrestled  
 in high school . . . Works for the  
 Roller Derby Skate Co., when not  
 on the banked track . . . Hobbies  
 are motor bikes, tinkering with  
 cars and playing poker.



#### JULIAN SILVA

San Francisco Bombers . . . 5'6"  
 . . . 145 lbs. . . Born, Los Angeles,  
 Calif., January 15, 1939 . . .  
 Joined Roller Derby in Los Ange-  
 les, Calif., October, 1955 . . . Also  
 skated for Braves and Chiefs . . .  
 Placed third in California re-  
 gional races before joining  
 Derby.

#### MARGARET BRADY

Chicago Westerners . . . 5'4" . . .  
 125 lbs. . . Born, Brooklyn, N. Y.,  
 June 23, 1934 . . . Joined Roller  
 Derby in Teaneck, N. J., May,  
 1953 . . . Also skated for Jolters  
 . . . Hobbies are horseback rid-  
 ing, painting and dancing.



#### BOB SEEVER

San Francisco Bombers . . . 5'7"  
 . . . 145 lbs. . . Born, Kansas City,  
 Kansas, October 8, 1939 . . .  
 Joined Roller Derby in San Ma-  
 teo, Calif.



#### JULIE "ACE" PATRICK

Hollywood Stars . . . 5'3½" . . .  
 120 lbs. . . Born, Buffalo, N. Y.,  
 . . . Joined  
 Roller Derby in Buffalo, N. Y.,  
 May, 1947 . . . Also skated for  
 Red Devils, Jolters, Braves, Clip-  
 pers, Bombers and Chiefs . . .  
 Broken ankle among Roller  
 Derby injuries . . . Worked as  
 cashier in movie theatre before  
 joining Derby . . . Has also  
 worked as beautician . . . Hob-  
 bies include skin diving and pho-  
 tography . . . All-star selection  
 four times . . . Runnerup for R.D.  
 Queen in 1955.

#### WHITEY SANTIAGO

Free Agent . . . 5'6½" . . . 145 lbs.  
 Born, New York, N. Y., January  
 31, 1939 . . . Joined Roller Derby  
 in New York, N. Y., January,  
 1960 . . . Played freshman  
 basketball in high school . . .  
 Skated for Chiefs . . . Hobby is  
 music.

#### MARLIS SCHWIEGER

Brooklyn Red Devils . . . 5'2" . . .  
 125 lbs. . . Born, Bremerhaven,  
 Germany, April 5, 1939 . . .  
 Joined Roller Derby in New York,  
 April 1959 . . . Has also been with  
 Chiefs . . . Likes photography and  
 painting.





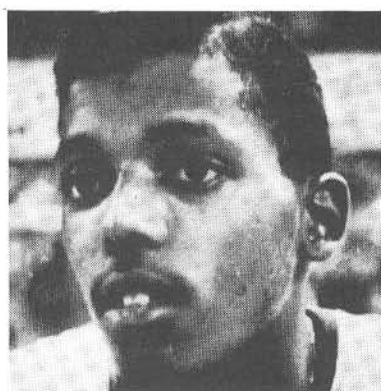
**CARMELLA "TINY" GROSSO**  
 Brooklyn Red Devils . . . 4' 11½"  
 . . . 100 lbs. . . . Born, Brooklyn,  
 N. Y., August 1, 1938 . . . Joined  
 Roller Derby in New York, N. Y.,  
 April, 1959 . . . Has also skated  
 with Chiefs, Braves and Bombers  
 . . . Hobbies are painting and  
 sports . . . Plays the guitar.



**CATHY READ**  
 Chicago Westerners . . . 5'6" . . .  
 120 lbs. . . . Born, Brooklyn, N. Y.,  
 August 17, 1940 . . . Joined Rol-  
 ler Derby in New York, N. Y., Feb-  
 ruary, 1959 . . . Also skated for  
 Chiefs and Red Devils . . . Hobb-  
 ies are dancing, swimming and  
 horseback riding.



**FRANK FREN**  
 Chicago Westerners . . . 5'9½" . . .  
 155 lbs. . . . Born, New York, N. Y.,  
 . . . Joined Roller Derby in New  
 York, N. Y., October, 1958 . . .  
 Played hockey and baseball be-  
 fore joining Derby . . . Served in  
 Air Force . . . Hobbies are swim-  
 ming, racing pigeons and driving  
 stock cars.



**RONNIE ROBINSON**  
 New York Chiefs . . . 5' 10½" . . .  
 140 lbs. . . . Born, New York,  
 N. Y., September 25, 1938 . . .  
 Joined Roller Derby in Chicago,  
 March, 1959 . . . His dad is  
 "Sugar" Ray Robinson of boxing  
 fame . . . Broke arm December 13,  
 1959, and was out for 10 weeks  
 . . . Hobby is tropical fish.



**JOHN HALL**  
 Brooklyn Red Devils . . . 6'1" . . .  
 180 lbs. . . . Born, Vicksburg,  
 Miss., June 22, 1936 . . . Joined  
 Roller Derby in New York, N. Y.,  
 February, 1959 . . . Also skated  
 for Ravens and Braves . . . Served  
 two-and-a-half years in Army . . .  
 Played basketball, handball and  
 track in high school.



**LIZ HERNANDEZ**  
 Hollywood Stars . . . 5'3" . . . 123  
 lbs. . . . Born, La Habra, Calif.,  
 October 2, 1940 . . . Joined Roller  
 Derby in Los Angeles, Calif.,  
 June, 1956 . . . Played softball . . .  
 Also skated for Bombers . . . Hobb-  
 ies are skating and horseback  
 riding.



**LORRAINE DeVRIES**  
 San Francisco Bombers . . . 5'4"  
 . . . 132 lbs. . . . Born, San Fran-  
 cisco, Calif.



**JUDY SOWINSKI**  
 San Francisco Bombers . . . 5'6"  
 . . . 130 lbs. . . . Born, Chicago, Ill.



**MARGE LASZLO**  
 Los Angeles Braves . . . 6' . . . 135  
 lbs. . . . Born, Long Beach, Calif.

# 1959 ROLLER DERBY

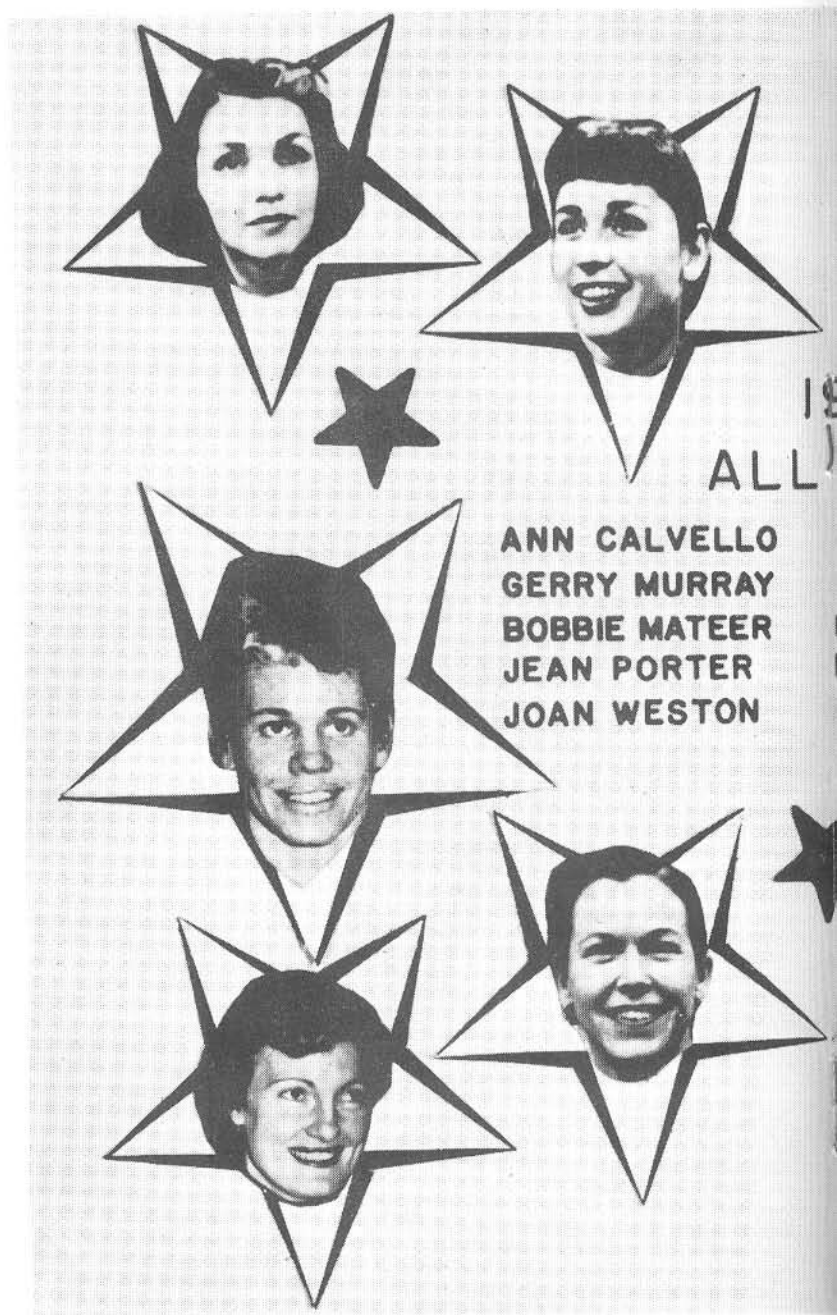
## LEADING SCORERS 1959

### MEN

Hal Janowitz, Westerners	693
Sam Skobel, Westerners	603
Bert Wall, Braves	473
Jim Ciota, Red Devils	423
Mike Gammon, Chiefs	398

### WOMEN

Gerry Murray, Chiefs	532
Loretta Behrens, West'n'rs	488
Barbara Mateer, Braves	415
Dolores Doss, Westerners	374
Ann Calvello, Bombers	346



ANN CALVELLO  
GERRY MURRAY  
BOBBIE MATEER  
JEAN PORTER  
JOAN WESTON

## ALL-STAR SELECTION

### MEN

	VOTES
Charlie O'Connell, Bombers	13,365
Hal Janowitz, Westerners	11,267
Bert Wall, Braves	10,238
Bill Laurino, Red Devils	
and Bombers	9,227
Red Smartt, Braves	8,196
Gene Gammon, Chiefs	7,176
Mike Gammon, Chiefs	6,162
Sam Skobel, Westerners	5,146
George Copeland, Braves	4,108
Russ Massro, Braves	3,090

# RBY ALL-STAR TEAM



1959

ALL-STAR

CHAS. O'CONNELL

HAL JANOWITZ

BERT WALL

BILL LAURINO

RED SMARTT

## ELECTIONS 1959

WOMEN	VOTES
Ann Calvello, Bombers	12,330
Gerry Murray, Chiefs	12,327
Barbara Mateer, Braves	10,283
Jean Porter, Ravens	9,272
Joan Weston, Westerners, Braves and Red Devils	8,237
Red Jensen, Bombers	7,206
Loretta Behrens, Westerners	6,172
Mary Youpelle, Braves	5,117
Dolores Doss, Westerners	4,098
Darlene Anderson, Chiefs	3,086

## FINAL LEAGUE STANDINGS 1959

	W.	L.	Pct.	GB
San Francisco Bombers	70	54	.565	—
Chicago Westerners	67	54	.554	1½
New York Chiefs	70	57	.551	1½
Los Angeles Braves	53	47	.530	5
Brooklyn Red Devils	46	71	.393	20½
Hollywood Ravens	42	65	.392	19½



# ROLLER BEAUTY

## ROLLER DERBY BEAUTY QUEENS (Selected By The Fans)

WINNER	YEAR
Arlyne Buchmann	1950
Gloria Clairbeaut	1951
Mary Gardner	1952
Dolores Doss	1953
-----	1954
Jean Porter	1955
Nellie Montague	1956
Mary Youpelle	1957
Joan Weston	1958
Gerry Murray	1959
Gerry Murray	1960



Joan Weston



MARY GARDNER  
This Blonde Beauty was '52 Queen



GLORIA CLAIRBEAUT  
1951 Choice of the Fans

# DERBY QUEENS

## RUNNERUP

Gloria Brendt  
Gerry Murray  
Blanche Lopez  
Mary Lou Palermo



Dolores Doss

Julie Patrick  
Jean Porter  
Jean Porter  
Joyce Beasley  
Ann Calvello  
Barbara Mateer



ARLYNNE BUCHMANN  
1950 Roller Derby Queen



## HAIL TO THE QUEEN

Gerry Murray is crowned Roller Derby Queen by coach Gene Gammon of the Chiefs.



Jean Porter

**BONNIE NELSON**

Hollywood Stars . . . 5'3" . . . 130 lbs. . . Born, Los Angeles, Calif., May 23, 1940 . . . Joined Roller Derby in Los Angeles, Calif., August, 1958 . . . Also skated for Braves and Red Devils . . . Played softball and enjoys bowling and swimming . . . Roots for L.A. Rams and Dodgers . . . Hobbies are drawing and painting.

**GENIE PAGE**

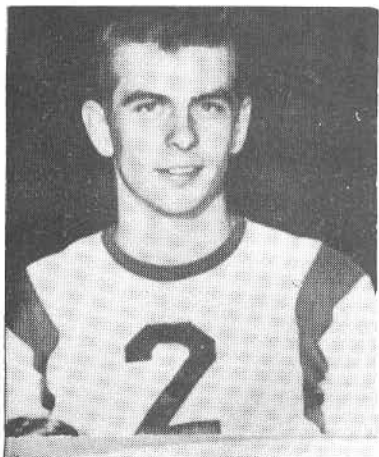
Brooklyn Red Devils . . . 5' 3½" . . . 119 lbs. . . Born, New York, N. Y., August 28, 1934 . . . Joined Roller Derby in New York, N. Y., January, 1959 . . . Has also skated for Chiefs and Westerners . . . Sings professionally and plays the guitar.

**EMILY KEMNER**

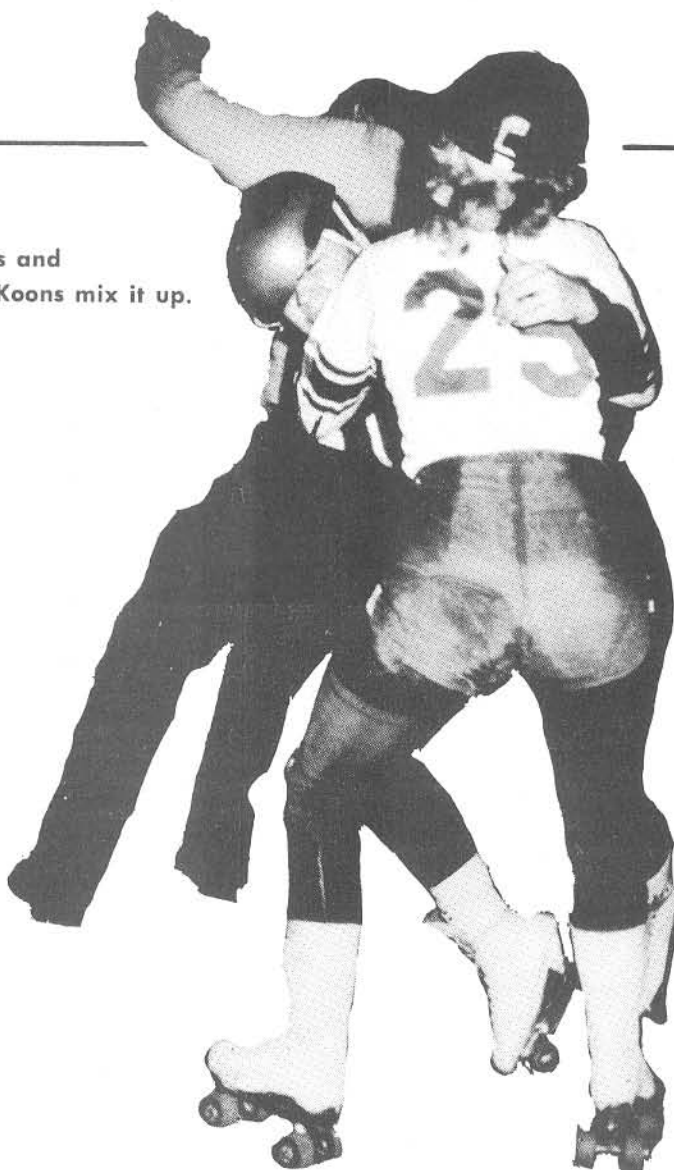
Free Agent . . . 5'3" . . . 125 lbs. . . Born, New York, N. Y., December 5, 1939 . . . Joined Roller Derby in Charlotte, N. C., June, 1958 . . . Has skated for Chiefs, Red Devils, Bombers and Ravens . . . Held several amateur skating titles before joining Derby . . . Hobbies are photography, painting, horseback riding and collecting records.



Judi McGuire of Chiefs and  
Red Devils' JoAnn Koons mix it up.

**GENE KUKLOVSKY**

Los Angeles Braves . . . 5'9" . . . 145 lbs. . . Born, Chicago, Ill., July 6, 1939 . . . Joined Roller Derby in Los Angeles, Calif., . . . Brother of Ron Kuklovsky, also of Braves . . . Also skated for Ravens . . . Won medals for cross-country in high school and did a little boxing.





**VINNIE GANDOLFO**  
 Chicago Westerners . . . 5'8" . . .  
 165 lbs. . . Born, Brooklyn, N. Y.  
 . . . Joined  
 Roller Derby in New York, N. Y.,  
 June, 1958 . . . Worked as book-  
 keeper before joining the Derby  
 . . . Hobby is collecting records.



**WHOA THERE MASKED MAN!**  
 Gene Kuklovsky (#52) of Braves is  
 stopped by Chiefs' Buddy Atkinson Jr.



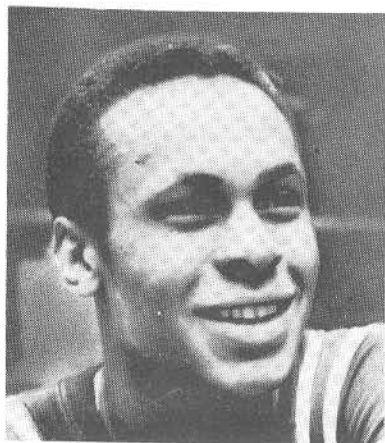
**DON RIXMAN**  
 Brooklyn Red Devils . . . 5'9" . . .  
 165 lbs. . . Born, Louisville, Ken-  
 tucky, September 18, 1930 . . .  
 Joined Roller Derby in Chicago,  
 Ill., September, 1949 . . . Served  
 in U. S. Army . . . Runnerup for  
 1951 Rookie-of-the-Year . . . Also  
 skated for Chiefs and Westerners  
 . . . Plays trumpet and string bass.



**DRU SCOTT**  
 New York Chiefs . . . 5'8" . . . 140  
 lbs. . . Born, Pasadena, Calif.,  
 September 12, 1938 . . . Joined  
 Roller Derby in Los Angeles,  
 Calif., June, 1958 . . . Also skated  
 for Bombers . . . Has broken arm,  
 foot and several toes since join-  
 ing Derby.



**JEAN PORTER**  
 Hollywood Stars . . . 5'3" 114 lbs.  
 . . . Born, Buffalo, N. Y., January  
 31, 1929 . . . Joined Roller Derby  
 in New York, N. Y., September,  
 1947 . . . Skated for Chiefs, Bom-  
 bers and Jolters . . . Starred in  
 movie "Roller Derby Queen" . . .  
 She's a Mohawk Indian.



#### GEORGE COPELAND

Las Angeles Braves . . . 6'1" . . . 168 lbs. . . . Born, Beverly Hills, Calif., January 18, 1939 . . . Joined Roller Derby in San Diego, Calif., June, 1956 . . . Also skated for Clippers and Chiefs . . . Finished second to Gil Orozco in 1957 Rookie-of-the-Year poll . . . Hopes to go to college and become lawyer . . . Nickname "The Jet".



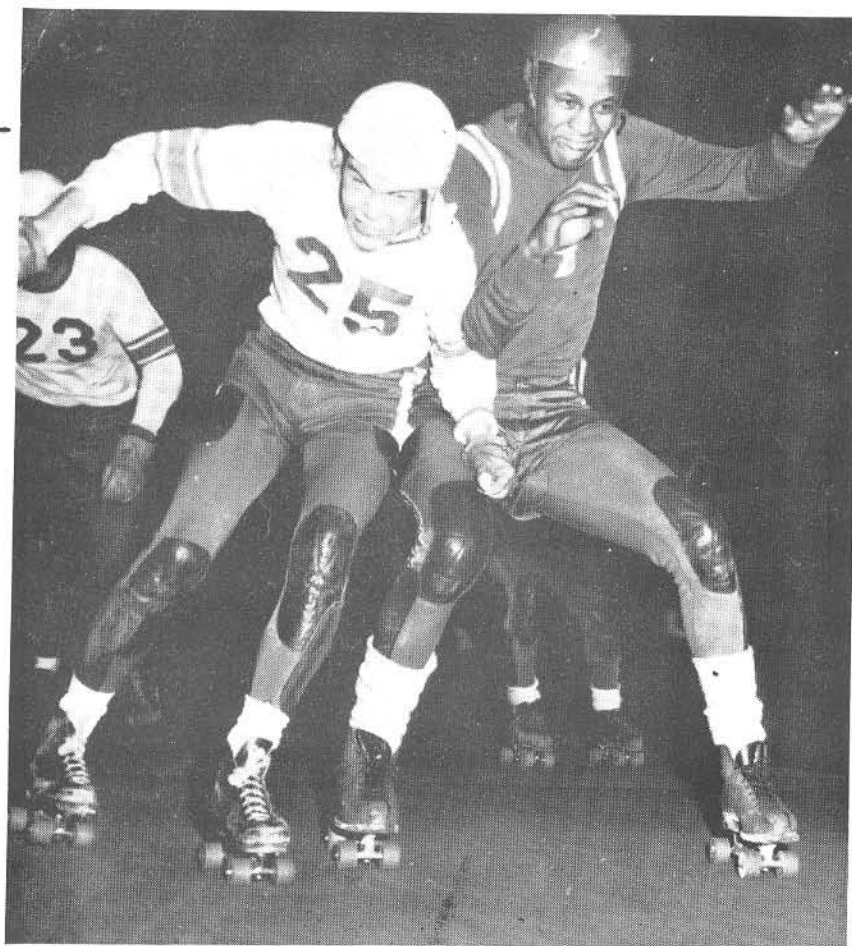
#### JoANN KOONS

Brooklyn Red Devils . . . 5'2" . . . 130 lbs. . . . Born, Columbus, Ohio, January 20, 1935 . . . Joined Roller Derby in Los Angeles, May, 1954 . . . Also skated with Chiefs and Westerners . . . Attended business college in L. A. . . . Capt. of Red Devils' girls team. Hobbies are bowling and swimming.



#### GAIL FUND

Free Agent . . . 5'5" . . . 130 lbs. . . . Born, Lincoln Park, N. J., January 27, 1938 . . . Joined Roller Derby in Miami, February, 1959 . . . Also skated with Westerners, Red Devils and Braves . . . Played basketball, softball, does horse-back riding, water skiing... Likes to paint.



#### PACK ACTION IN N. Y.

Mike Gammon (#25) of Chiefs swaps blocks with Braves' George Copeland.



#### ANNIS "RED" JENSEN

San Francisco Bombers . . . 5'3" . . . 135 lbs. . . . Born, San Francisco, Calif., September 20, 1923 . . . Joined Roller Derby in Chicago, Ill., 1940 . . . Married to former Derby skater Russ Baker and has three daughters . . . All-around athlete in high school . . . Out of Derby from 1944 to 1949 . . . Also skated for Westerners.



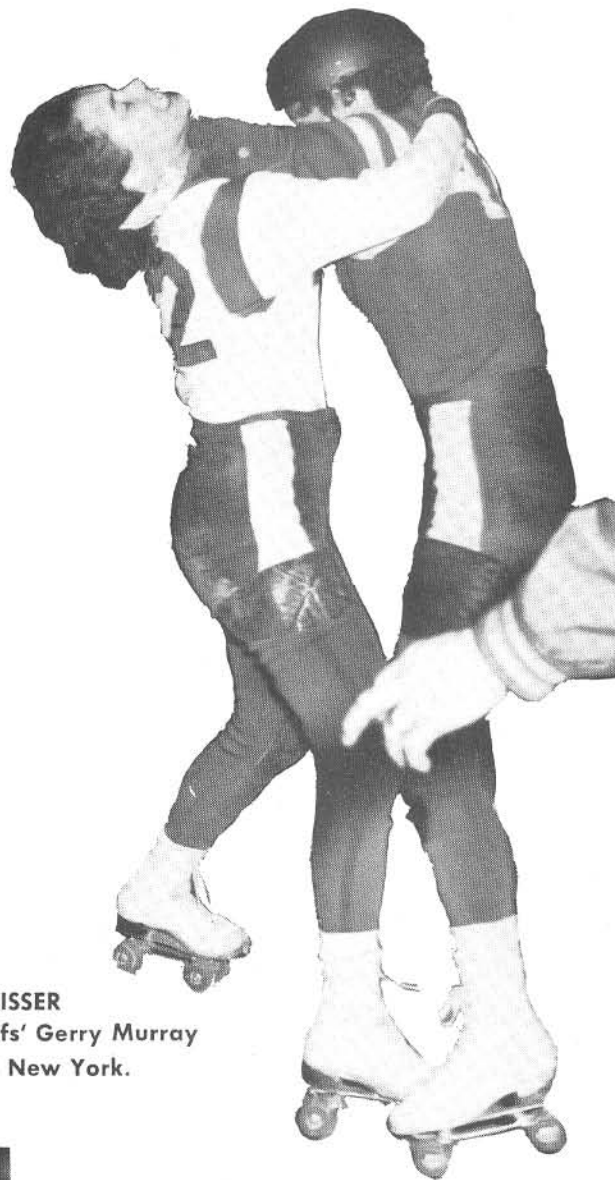
#### BARBARA MATEER

Los Angeles Braves . . . 5'4" . . . 115 lbs. . . . Born, Woodridge, N. J., June 21, 1934 . . . Joined Roller Derby in New York, N. Y., March, 1950 . . . Also skated for Chiefs, Jolters and Westerners . . . Rookie-of-the-Year in 1951 . . . Most Valuable Player in 1952 World Series . . . Led girls in scoring in 1957 and is leading this season.



#### GERRI ABBATELLO

Free Agent . . . 5'1½" . . . 104 lbs. . . . Born, New York, N. Y., August 18, 1929 . . . Joined Roller Derby in New York, N. Y., February, 1950 . . . Has skated for Chiefs, Ravens, Clippers, Jets, Jolters, Red Devils and Braves . . . Won 1947 National and New York State Speed Skating titles . . . Has broken both collar-bones in Derby competition.



#### POW, RIGHT IN THE KISSER

Westerners' Joan Weston gives Chiefs' Gerry Murray an elbow in the face during a scrap in New York.



#### CLAUDE "BUTCH" KNERR

New York Chiefs . . . 6' . . . 180 lbs. . . . Born, Los Angeles, Calif., March 23, 1940 . . . Joined Roller Derby in Los Angeles, Calif., October, 1956 . . . Also skated for Braves, Red Devils, Jolters, Westerners and Ravens . . . Brother, George, was former Derby skater . . . Hobbies are baseball, bowling and music.



#### EDWARD "CHICK" CHOKOTA

Hollywood Stars . . . 5'11" . . . 155 lbs. . . . Born, Duquesne, Penn., July 7, 1931 . . . Joined Roller Derby in Los Angeles, Calif., June, 1955 . . . Also skated for Red Devils and Clippers . . . Played football, baseball and basketball in high school . . . Hobby is collecting records.

#### GEORGE ADAMS

San Francisco Bombers . . . 5'5" . . . 130 lbs. . . . Born, Natick, Mass., August 26, 1940 . . . Joined Roller Derby in Los Angeles, Calif., February, 1959.







#### JAY SHAW

Brooklyn Red Devils . . . 5'9" . . . 140 lbs. . . . Born, Bronx, N. Y., January 16, 1941 . . . Joined Roller Derby in New York, N. Y., April, 1959 . . . Also skated for Chiefs . . . Played Roller Hockey . . . Enjoys sports, especially hockey and basketball.



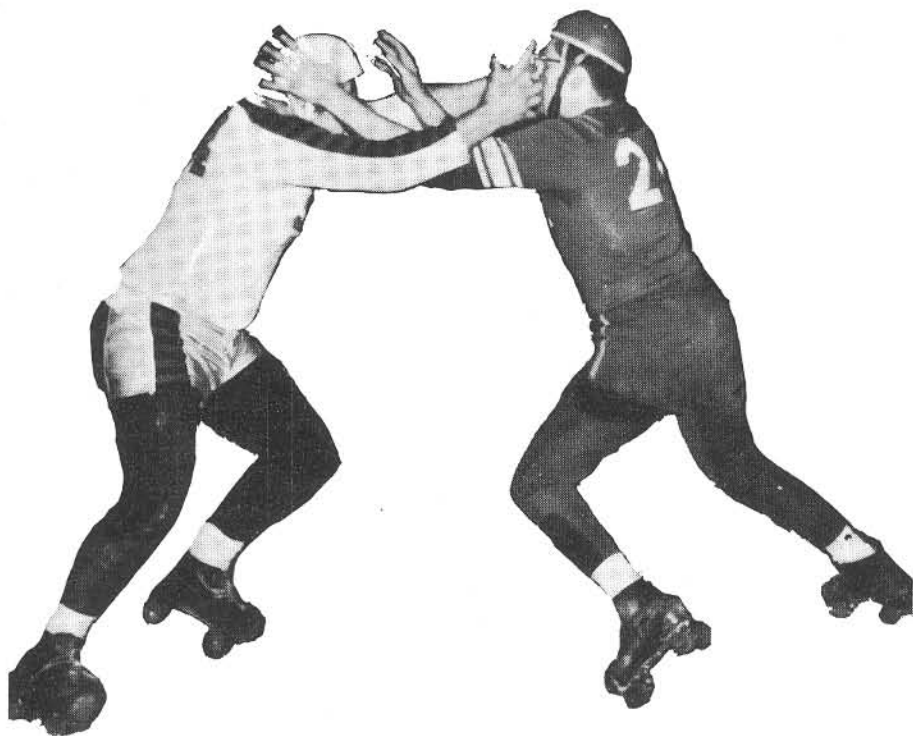
#### CECIL HATFIELD

Chicago Westerners . . . 6'2" . . . 180 lbs. . . . Born, Drumright, Okla., January 24, 1935 . . . Joined Roller Derby in Los Angeles, Calif., July, 1955 . . . Also skated for Chiefs, Red Devils, Braves, Jolters and Bombers . . . Was coach of Chiefs . . . Hobbies are music and photography.



#### BARBARA O'LEARY

Chicago Westerners . . . 5'3" . . . 110 lbs. . . . Born, Brooklyn, N. Y., July 23, 1938 . . . Joined Roller Derby in New York, N. Y., January, 1959 . . . Also skated for Chiefs, Red Devils, Braves and Ravens . . . Hobbies are drawing, music and movies.

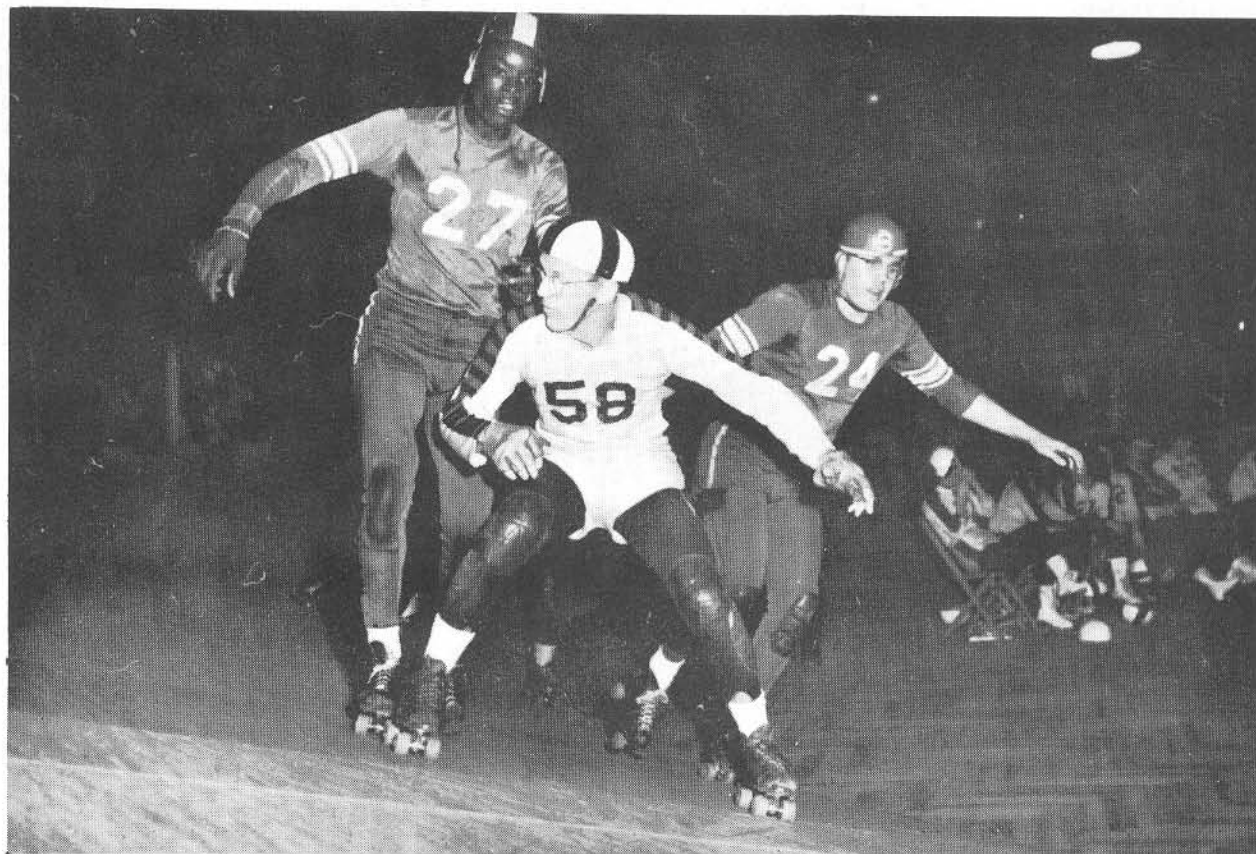


No, it's Brooklyn's John Parker (left) and Buddy Atkinson Jr., of New York in one of their bouts at the Ninth Reg't Armory.

#### NICK SCOPAS

Brooklyn Red Devils . . . 5'7" . . . 140 lbs. . . . Born, Astoria, L. I., N. Y., June 3, 1938 . . . Joined Roller Derby in Charlotte, N. C., June, 1958 . . . Also skated for Chiefs and Westerners . . . Played amateur hockey before joining Derby . . . Suffered serious eye injury last Summer and wears protective guard while skating.





#### NO GETTING PAST SPEC

Braves' Spec Saunders blocks out two Chiefs, Bob Woodberry (#29) and Buddy Atkinson Jr.



#### BILLY GARDNER

New York Chiefs . . . 5'9" . . . 150 lbs. . . . Born, Knoxville, Tenn., April 30, 1931 . . . Joined Roller Derby in New York, N. Y., February, 1950 . . . Also skated for Panthers and Westerners . . . Served two years in Army . . . His brother, "Punky", and sisters, Mary and Helen, were former Derby skaters.



#### DOLORES DOSS

Chicago Westerners . . . 5'8" . . . 125 lbs. . . . Born, Milwaukee, Wisc., October 22, 1930 . . . Joined Roller Derby in Milwaukee, Wisc., May, 1949 . . . Also skated for Panthers and Chiefs . . . Was elected Roller Derby Queen in 1953 . . . Broken jaw among her injuries . . . Has modeled.



#### JOHN PARKER

Brooklyn Red Devils . . . 6' . . . 245 lbs. . . . Born, Los Angeles, Calif., March 23, 1931 . . . Joined Roller Derby in Los Angeles, Calif., November, 1956 . . . Attended Long Beach State and Los Angeles Junior Colleges . . . Served in U. S. Navy . . . Played football in college . . . Also skated for Braves.



Irene Van Kirk



Barbara Mateer



Joyce Ray



GIL OROZCO



Lou Guzman



Sharon Alsop

# ROOKIES OF

(Selection By

## MEN

Hank Goldberg  
Lou Guzman

Bob Gallardo  
Charlie O'Connell  
Babe Detato (East)  
Gerry Rapp (West)

LeRoy Gonzalez  
Gil Orozco  
Pete Mangone  
Mike Gammon





Helen Liska



Darlene Anderson

# THE YEAR!!

## The Coaches)

YEAR	WOMEN
1950	Becky Thomas
1951	Barbara Mateer
	Irene Van Kirk (tie)
1952	Helen Liska
1953	Joan Kazmerski
1954	Gypsy Stone (East)
1954	Joyce Ray (West)
1955	
1956	Joan Raborn
1957	Sharon Alsop
1958	Darlene Anderson
1959	Jan Vallow



Charlie O'Connell



**ROOKIE AWARD WINNERS**  
Jan Vallow and Mike Gammon, 1959 Rookies-of-the-Year.



**THE GAMMON FAMILY  
YESTERDAY AND TODAY**  
Gene, Gerry and Mike  
of the Chiefs.



**PEGGY HEALY**  
New York Chiefs . . . 5'4" . . . 135  
lbs. . . . Born, County Cork, Ire-  
land, September 5, 1937 . . .  
Joined Roller Derby in New York,  
N. Y., January, 1960 . . . Worked  
as long distance operator . . .  
Hobbies are sports, dancing and  
photography . . . Also skated for  
Red Devils.



**KEN WILLIS**  
Free Agent . . . 6'3" . . . 210 lbs.  
. . . Born, Corona, N. Y., Febru-  
ary 4, 1934 . . . Joined Roller  
Derby in New York, N. Y., No-  
vember, 1957 . . . Skated for  
Chiefs, Red Devils and Bombers  
. . . Worked as life guard . . .  
Hobby is collecting guns.



**DARLENE ANDERSON**  
Los Angeles Braves . . . 5'5" . . .  
127 lbs. . . . Born, Pasadena,  
Calif., March 6, 1939 . . . Joined  
Roller Derby in Los Angeles,  
Calif., September, 1957 . . . Also  
skated for Chiefs . . . Rookie-of-  
the-Year in 1958 . . . First Negro  
girl to skate in Roller Derby.



**DON LEWIS**  
Former star now refereeing

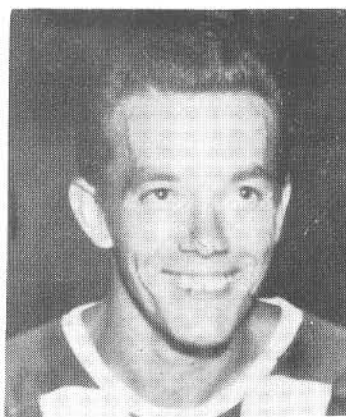


**BOB SATTERFIELD**

## Headliners Of Yesterday



**DOM PARINELLA**



**JACK WILSON**

HOWIE RAINES and MARY CIOFANI are in the hotel business in Oklahoma City . . . TEDDY RANDALL is in the construction business in Omaha, Nebraska . . . LOU STASIUK is living in San Carlos, California . . . PHIL RUPP has a bar in Chicago . . . ANITA REYNOLDS, the Oneida Indian Princess, is married and lives in Toledo, Ohio . . .

RUSS BAKER is in the construction business in Oakland where he, his wife—ANNIS JENSEN—and their three daughters live . . . ROY GOWIN is a field engineer for an aircraft outfit in Texas . . . KATY KING and her spouse run a restaurant in Albeguerque, New Mexico . . . SPEC SAUNDERS—when he is isn't skating in the Derby—runs a roller rink on the West Coast where he lives with his wife, JOAN HILL.



**MARY GARDNER**





**ANN BAUER**

Brooklyn Red Devils . . . 5'4" . . . 112 lbs. . . . Born, Brooklyn, N. Y., July 4, 1939 . . . Joined Roller Derby in New York, Feb. 1959 . . . Has been with Chiefs and Westerners . . . Collects records . . . Likes to sew . . . Also likes bowling and ice skating.



**ROBERTA MITCHELL**

Brooklyn Red Devils . . . 5'7" . . . 140 lbs. . . . Born, Mobile, Ala., June 30, 1935 . . . Joined Roller Derby in New York, N. Y., October 1958 . . . Also skated for Bombers . . . Attended business college in Los Angeles and took up nursing . . . Hobbies are sewing and dancing.



**SONNY RIMATELLO**

. . . 5'4" . . . 132 lbs. . . . Born, Brooklyn, N. Y., April 27, 1931 . . . Joined Roller Derby in San Francisco, June 1959 . . . Also skated for Chiefs, Red Devils and Braves . . . Played baseball in high school . . . Likes bowling and fishing.



**JANICE WILLIAMS**

New York Chiefs . . . 5'4" . . . 128 lbs. . . . Born, New York, N. Y., August 7, 1938 . . . Joined Roller Derby in New York, March 1959 . . . Also skated with Hollywood . . . Also played softball, tennis and swims.



**JESSE McFARLAND**

Brooklyn Red Devils . . . 5'9" . . . 135 lbs. . . . Born, New York, N. Y., September 2, 1940 . . . Joined Roller Derby in New York, N. Y., January, 1960 . . . Played basketball for youth center . . . Hobby is dancing.



**ANN CALVELLO**

San Francisco Bombers . . . 5' 6 1/2" . . . 126 lbs. . . . Born, Newport, Rhode Island, August 1, 1929 . . . Joined Roller Derby in San Francisco, Calif., June, 1949 . . . Also skated for Panthers, Chiefs, Jolters and Westerners . . . Finished second to Gerry Murray in 1959 Roller Derby Queen election . . . All-star in 1959.



**"SPEC" SAUNDERS**

**CHARLIE "SPEC" SAUNDERS**

Los Angeles Braves . . . 5'9 1/2" . . . 170 lbs. . . . Born, Louisville, Ky., May 12, 1925 . . . Joined Roller Derby in Louisville, Ky., November, 1942 . . . First skater in Derby to wear glasses . . . Served in Air Force during World War II . . . Managed a skating rink before returning to the Derby this season . . . Also skated for Westerners, Chiefs, Ravens and Panthers . . . Coached Panthers and Chiefs . . . Hobby is motorcycling . . . All-star selection several times . . . One of the Roller Derby's all-time greats.

**AL DUBE**

Free Agent . . . 5'8" . . . 160 lbs. . . . Born, Philadelphia, Pa., May 10, 1936 . . . Joined Roller Derby in New York, N. Y., January, 1960 . . . Played basketball in high school . . . Spent four years in Navy . . . Has done a little acting and is interested in theatre . . . Has skated with Chiefs, Westerners, Braves and Red Devils.

## ROLLER DERBY RECORDS

Highest Scoring Game: Red Devils, 85; Jolters, 80 — on Dec. 16, 1951 (Total 165 Points).  
Lowest Scoring Game: Bombers, 3, Red Devils, 2 (Oct. 19, 1958).  
Most Points Single Game — Men: Sid Harnesk, Westerners — 32 (1952).  
Most Points Single Game — Women: Gerry Murray, Chiefs, 20.  
Most Five-Pointers One Season — Women: Gerry Murray, Chiefs, 54 — 1952.  
Most Five-Pointers One Season — Men: Sid Harnesk, Westerners, 108 — 1953.  
Most Five-Pointers One Game — Men: Sam Skobel, 4.  
Most Five-Pointers One Game — Women: Monta Jean Payne and Mary Lou Palermo, 3.  
Fastest Five-Pointer: Julie Patrick, Jolters, 12 seconds (1951 — In Jersey City, N. J.).  
Fastest lead in game: Chicago Westerners, 18-0, against N.Y. Chiefs (Nov. 6, 1954).  
Most Five-Pointers in one period: Bert Wall, Chicago Westerners, 3, against Brooklyn Red Devils, 1956.  
Most Points By Team in One Period: Chicago Westerners, 31.



## WORLD SERIES RECORDS

Highest Point Total in One Series — Women: Toughie Brasuhn, Red Devils — 61 (1954).  
\*Tied by Bert Wall, Jolters, in 1954.



Julie Patrick



Gerry Murray



Monta Jean Payne



**ROLLER DERBY**

# 1000

**YEARBOOK**

