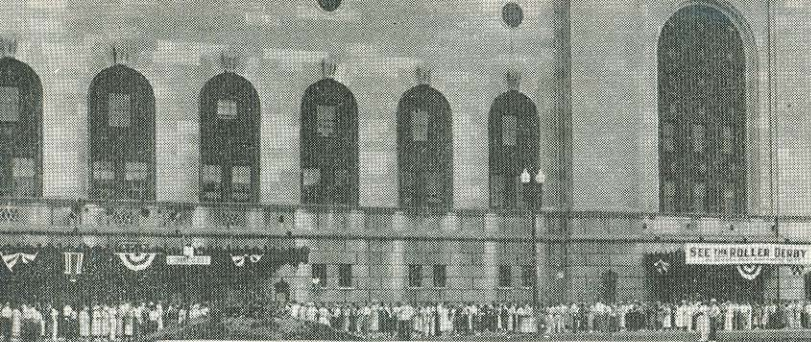




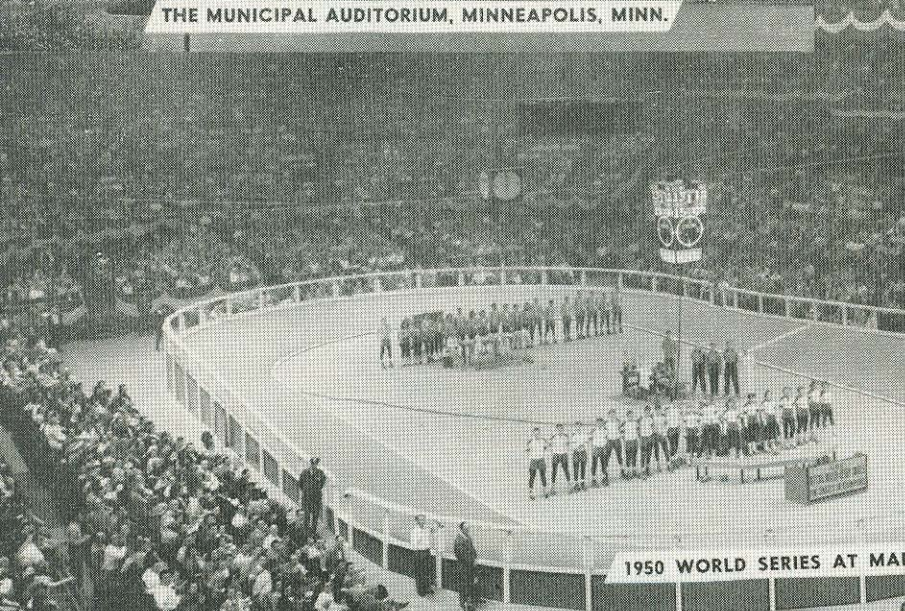
NATIONAL ROLLER DERBY





THE MUNICIPAL AUDITORIUM, MINNEAPOLIS, MINN.

TONITE
ROLLER DERBY
JUNE 28 BOXING
AT POLO GROUNDS
AMOTTA vs GRAZIANO



MADISON SQUARE GARDEN

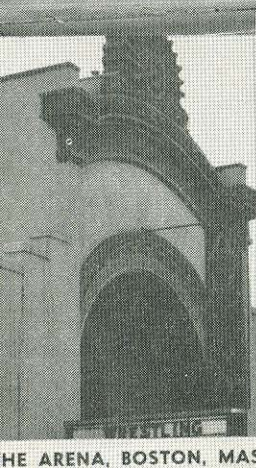
1950 WORLD SERIES AT MADISON SQUARE GARDEN, NEW YORK CITY



THE COLISEUM, CHICAGO, ILL.
THE HOME OF ROLLER DERBY



ULINE ARENA, WASHINGTON, D. C.



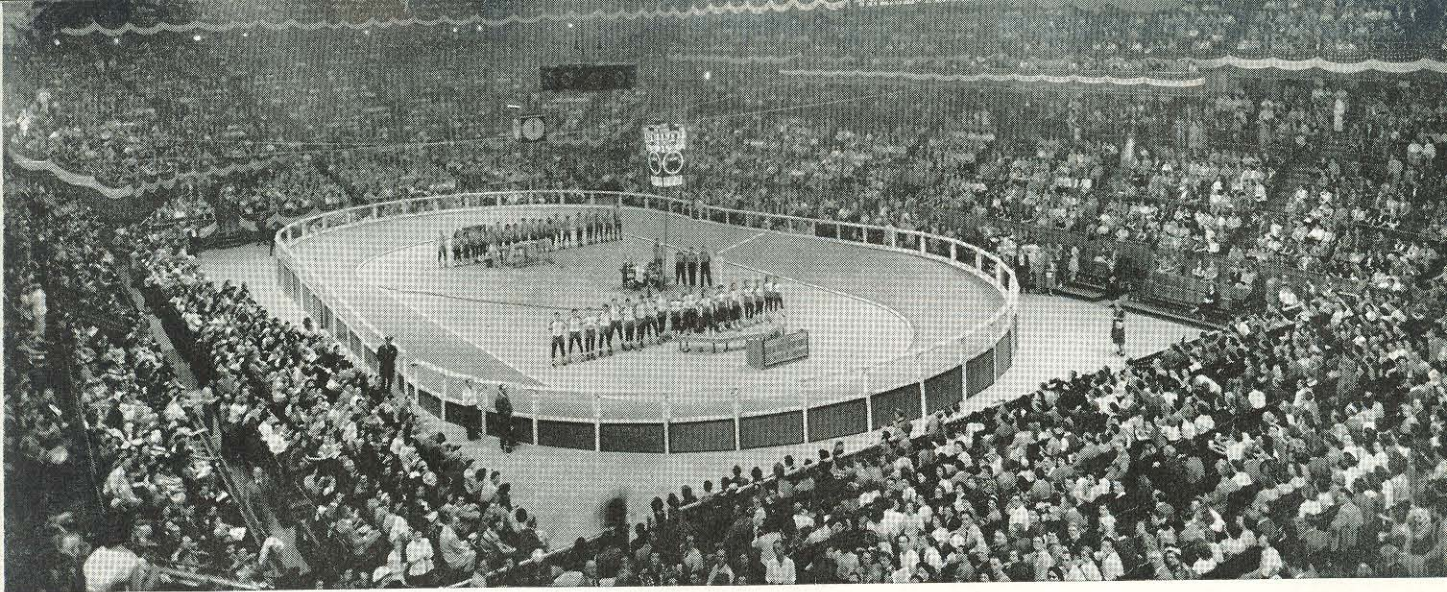
THE ARENA, BOSTON, MASS.



NATIONAL GUARD ARMORY, TEANECK, N. J.



THE OLYMPIA, DETROIT, MICH.



WHAT IS THE ROLLER DERBY ALL ABOUT

By JUSTIN COOPER, Long Island Star-Journal

LEO A. SELTZER'S spanking-new Roller Derby baby of 17 years ago is a big boy now. If enough months roll around the little gentleman, who got his start on a restaurant napkin in Chicago, may have his own family of minor leagues throughout the country.

Yes, with a new year here, the question is: "What's in store for the Derby in 1952?" This is also a good time to glance back over the past 365 days for they have been eventful.

The year of 1951 produced many thrills and surprises so far be it for us to pick the outstanding event of the last 12 months. Probably the most notable achievement of Roller Derby was its return to television over WCBS-TV in the New York area. It was video that helped give the sport prominence.

With the wheeling warriors back on the television screen, the initial response was most encouraging. Presently the Derby is being shown on film via the sight medium in many parts of the United States, including Cleveland, Philadelphia, Detroit, Boston and Los Angeles — a true cross-section.

From an individual angle, the most heart-warming event of 1951 was enacted with just five days left in the old year. The scene was Cleveland's Public Auditorium and the start of a series between the Jersey Jolters and the Westerners. The night was Dec. 27.

For many newcomers to Derby doings, it was just the start of another game. For veteran followers it was a stirring moment. It was gametime and as the announcer gave the lineups over the PA system the name of Ken Monte echoed through the arena — the first time in nearly a year.

Sure enough, the man whom doctors told 11 months ago he would never be able to skate again, was back on the banked track. Monte, almost killed in an

automobile crash in which he received such severe injuries that his left leg was in a cast for six months, had come back for his most glorious moment of triumph.

It was a thrilling sight for Midge (Toughie) Bra-suhn, too. Toughie has received about every honor a professional athlete can garner, but her husband's return brought tears to the lady whose pugnaciousness, all-around ability and crowd appeal made her one of the 10 top women athletes in the country during 1950.

As the Cleveland series opened, the other half of the circuit was bowing in at New York City's 14th Street Armory. There was nostalgia there, too, as Charlie (Specs) Saunders went back into skating action for the first time in four months.

With the past now part of the wonderful history of Roller Derby, it is the future which offers the challenge. The fate of Roller Derby, in the last analysis, rests with you — its loyal fans.

Many things are planned for the months and even the years to come. Leo A. Seltzer hopes the day is not far off when the league has 12 teams in major cities from coast to coast in addition to junior loops in the hinterlands.

The recent Korean crisis, which has sent over 30 skaters into the armed forces, will make the task of building Derby teams across the nation that much more difficult. However, the sport has overcome obstacles in the past and this will just be another hurdle before the project is accomplished.

This year is to be devoted to developing new skaters and organizing junior competition in various skating rinks as the Derby's contribution to building the character of the nation's younger generation.

Well, it's nearly starting time, so sit back, relax — if you can — and watch 'em roll!



George Raft, star of many movies, leans over Peggy O'Neil, one of the greats of the early days of Roller Derby.



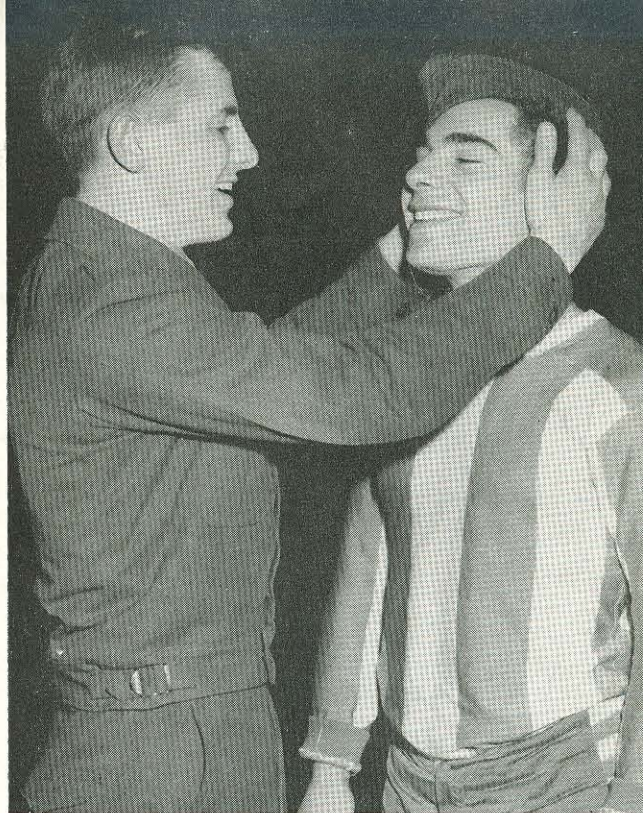
"Ma" Bogash, the grand old lady of the wheeling sport, was one of the most popular stars in the history of Roller Derby. Ma, now well into her sixties, still swears she could go with the best of the lassies on the banked track.

Leo A. Seltzer, Roller Derby Pioneer, hands Billy Bogash the Most Valuable Player award after the 1949 World Series. Billy, one of the all time stars of Roller Derby, was the first president of the International Professional Roller Racers Association, the skaters union.





Milton Berle, Mr. Television himself, hams it up for the cameras with two Roller Derby lovelies, Carmen Zeni on the left and Arlynne Buchmann on the right.



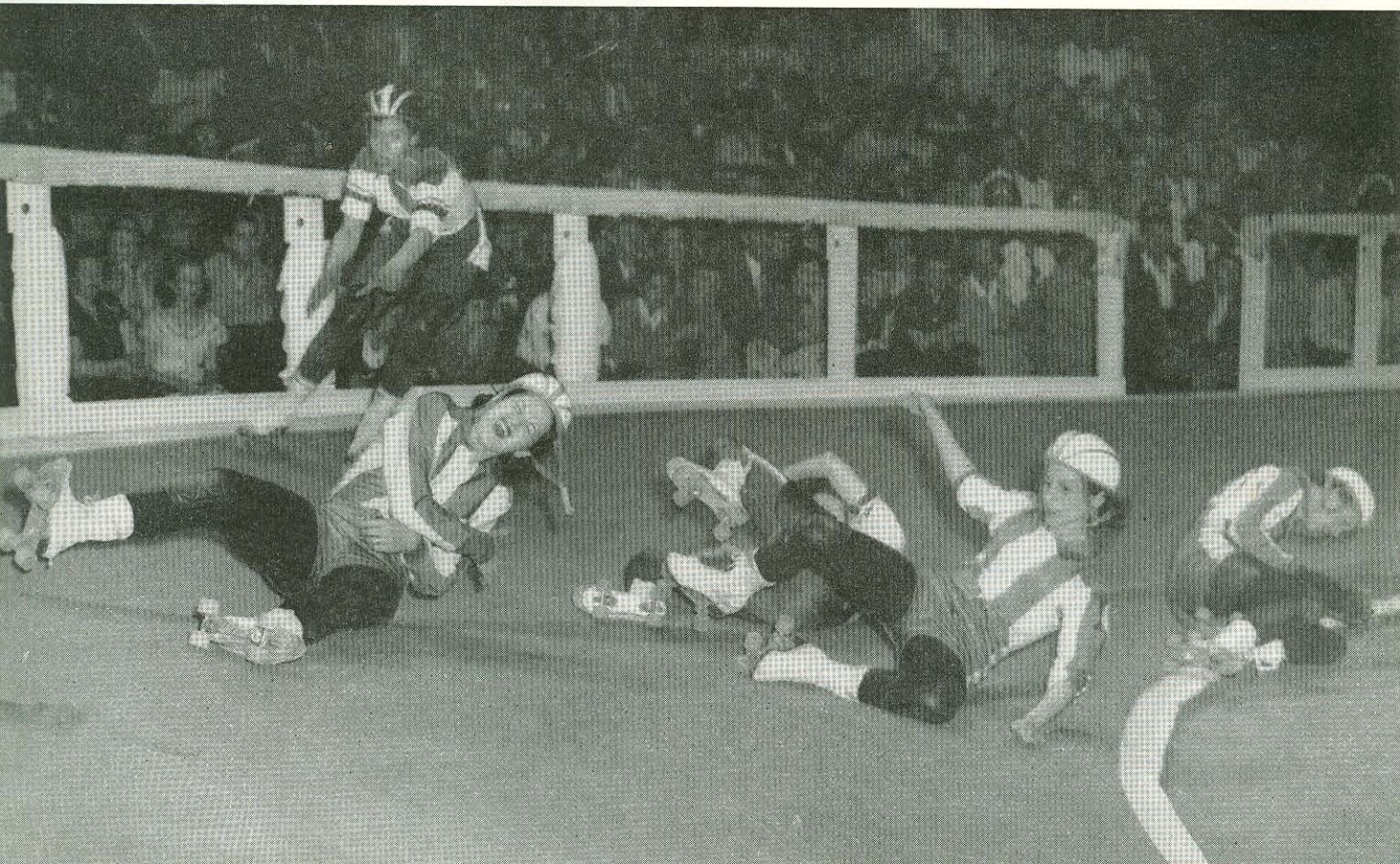
Two of the most promising Roller Derby youngsters are Herby Plump on the left and Frank Baeli on the right. Frank is trying Herby's Overseas cap on for size. Both boys are now in the service and at last reports Frank, formerly with the Jolters, was in the front lines of Korea.



TV madcaps Dean Martin and Jerry Lewis clown with two of the prettier Derby dolls Barbara Mateer and Virginia Rushing.



SPILLS





THRILLS



FACTS AND

WORLD CHAMPIONS

Chiefs — 1951

(defeated Westerners 26-25 at Madison Square Garden)

Jolters — 1950

(defeated Red Devils 24-22 at Madison Square Garden)

Chiefs — 1949

(defeated Red Devils 26-21 at Madison Square Garden)

MOST VALUABLE PLAYERS

Toughie Brasuhn — 1949

Bill Bogash — 1949

Toughie Brasuhn — 1950

Carl Payne — 1950

Toughie Brasuhn — 1951

Sam Skobel — 1951

Russ Massro — 1951

PENNANT WINNERS

Westerners — 1951

Panthers — 1950

Chiefs — 1949

INDIVIDUAL SCORING 1950

Men	Pts.	Women	Pts.
Spec Saunders	503	Gerry Murray	536
Sid Harnesk	481	Toughie Brasuhn	531
Bob Lewis	439	Mary Ciofani	380
Buddy Atkinson	391	Monta Jean Payne	346
Ken Monte	387	Mary Gardner	319
Hal Janowitz	382	Mary Lou Palermo	307
Russ Massro	367	Annis Jensen	289
Carl Payne	358	Slugger Kealey	285
Bill Bogash	356	Alice Edwards	274
Howie Raines	331	Ann Calvello	264

ALL-AMERICANS 1950

Men	Votes	Women	Votes
Bill Bogash	36,724	Gerry Murray	42,613
Carl Payne	32,453	Monta Jean Payne	41,119
Spec Saunders	32,007	Toughie Brasuhn	37,345
Ken Monte	27,562	Mary Gardner	23,267
Sid Harnesk	25,984	Mary Lou Palermo	23,178
Sam Skobel	24,629	Annis Jensen	22,897
Johnny Karp	23,278	Slugger Kealey	22,128
Elmer Anderson	21,863	Bobbie Johnstone	20,897
Silver Rich	20,648	Georgeanna Kemp	18,996
Gene Gammon	18,756	Ann Calvello	18,382

ARLYNNE BUCHMANN, ROLLER DERBY QUEEN

FIGURES ABOUT THE WHEELERS

GAME STATISTICS

Lowest Game Score

Jets 8 — Westerners 6
(March 23, 1950)

Highest Game Score

Red Devils 70 — Westerners 51
(Nov. 5, 1951)

All Star Games 1951

All Stars 27 — Chiefs 15
All Stars 31 — Chiefs 23
All Stars 26 — Chiefs 16

INDIVIDUAL STATISTICS

Single Game Scoring Record (Individual)

Dick Wehner, Red Devils — 26
Gerry Murray, Chiefs — 20

Most 5 pointers in single season

Bill Bogash, Chiefs — 43 (1951)
Gerry Murray, Chiefs — 46 (1950)

High Point Total in World Series

Ken Monte, Jolters — 39 (1949)
Toughie Brasuhn, Jolters — 43 (1950)

INDIVIDUAL SCORING 1951

Men	Pts.	Women	Pts.
Bert Wall	649	Gerry Murray	603
Sam Skobel	643	Midge Brasuhn	526
Red Smartt	548	Mary Lou	
Hal Janowitz	543	Palermo	514
Spec Saunders	519	Ann Calvello	429
Sid Harnesk	506	Mary Ciofani	418
Bob Satterfield	418	Mary Gardner	412
Russ Massro	396	Gerri Abbatello	395
Val Panzitta	383	Julie Patrick	387
Tommy Atkinson	342	Jean Porter	381
		Alice Edwards	378

ALL-AMERICANS 1951

Men	Votes	Women	Votes
Gene Gammon	63,432	Midge Brasuhn	67,241
Sam Skobel	60,197	Mary Lou	
Bert Wall	59,349	Palermo	65,976
Carl Payne	59,175	Gerry Murray	65,814
Sid Harnesk	56,968	Annis Jensen	60,009
Bill Bogash	54,763	Slugger Kealey	59,432
Spec Saunders	52,819	Bobbie Johnstone	
Red Smartt	49,234		58,618
Russ Massro	49,167	Julie Patrick	55,412
Buddy Atkinson		Mary Gardner	53,095
		Monta Jean Payne	
			53,068
	46,859	Ann Calvello	49,138



GLORIA CLAIRBEAUT, ROLLER DERBY QUEEN 1951



STARS ON AND OFF THE TRACK

CELEBRITIES have been Roller Derby bugs since the first game in Chicago seventeen years ago. Hollywood and Broadway personalities have turned out in ever increasing numbers to view the wheelers on the banked oval as Roller Derby grew to nationwide fame.

Such screen personalities as Eleanor Powell, Cary Grant, Eddie Cantor, Marilyn Maxwell (seen in the top photo on the left hand page), Caesar Romero and hosts of others are nightly regulars when the Derby rocks and rolls in California.

In the lower picture on the left hand side of the page you'll see a real old photo of two great stars. That's Ivy King on the left, one of the all time

immortals of Roller Derby and the chubby smiling youngster on the right is none other than movie youngster Jane Withers.

Right below you'll see Arthur MacArthur, son of the famous General, receiving a pair of skates from Gerry Murray, one of the modern greats of the masonite. Arthur was a spectator at the 1951 World Series and was gifted with the skates at that time.

From these few pictures you can see that you never know who you'll run into at the Derby. So take a good look at the person seated next to you, it might be Faye Emerson or Vincent Impellitteri. You never can tell.



NEW OFFICIAL ROLLER DERBY RULES AND REGULATIONS

RULE 1—GENERAL

- A) Each game shall be divided into two halves of four 12-minute periods each.
- B) Player limitations on any team in the National Roller Derby League shall be not more than twenty (20) active skaters on the roster.
- C) A jam shall be defined as an effort to score one or more points. A jam occurs when one or more skaters break away from the field of skaters (hereafter referred to as the pack) in an effort to score. A buzzer or whistle will signify the start of a jam when the entire field is intact with two skaters from opposing teams in alternate positions at the front of the field or pack. In order to score, the skater or skaters going out on a jam must completely circle the track, reach the back of the pack and pass at least one member of the opposition within a two minute time period.
- D) The time limit for all jams shall be two minutes as registered on the official clock.
- E) Only two skaters from each team are eligible to score on any one jam.

RULE 2—SCORING

- A) Points are scored as follows:
 - 1) For completing a jam by circling the track within two minutes and passing one member of the opposition 1 POINT
 - 2) For passing two members of the opposition 2 POINTS
 - 3) For passing three members of the opposition 3 POINTS
 - 4) For passing four members of the opposition 4 POINTS
 - 5) For passing all the members of the opposing team on the track at the time of the jam 5 POINTS
- B) If a blocker commits a foul on a JAM skater, the jam skater will be awarded the point that he is attempting to score.
- C) When a blocker is passed by a jam skater for one point, that same blocker may be passed for another point by the same jam skater if the jam skater LAPS the blocker for the second time. The blocker could be passed by the same jam skater any number of times for points in this manner.
- D) Any defensive skater who is knocked down, forced over the rail, forced into the infield or injured may attempt to block the jammer before he is passed. A defensive skater forced out of the play in this manner cannot be replaced until he has been passed by an opposing jammer.
- E) An immediate substitution is only allowed in cases of skate trouble.
- F) A jam may be called off at the discretion of the referee because of an injury or damage to the track.
- G) A skater forced into the infield may not better the position he was in when he left the track. A defensive skater defending against a jammer who is forced on the infield and betters his position will be considered passed for a point.

RULE 3—REPLACEMENTS

- A) When one skater replaces a teammate he must report to the official scorer and then make contact with the skater he is replacing and drop in back of the first man in the pack.
- B) Any skater who illegally replaces a teammate will be considered a sixth man on the track and will automatically be penalized with a minor penalty (two minutes).
- C) Any skater bettering the position of the skater he is replacing before he is a legal substitute will be considered a sixth man on the track and will automatically receive a two minute penalty.
- D) There will be no substitutions while the jam is in progress except when one of the active skaters has skate trouble. A defensive skater who is forced over the rail, forced into the infield or injured may not be replaced until he is passed by an opposing jammer.

RULE 4—CONCLUDING A JAM

Jam will be considered at an end for any of the following:

- 1) The expiration of the two minute time limit.
- 2) At the conclusion of each twelve (12) minute skating period.
- 3) When the leading jam skater falls.
- 4) If the leading jam skater leaves the track with both skates.
- 5) In case of an official time out (called at the discretion of the referee).
- 6) By the leading jam skater placing both hands on his hips.

RULE 5—PENALTIES

- A) There will be two penalties, a major (five minutes) and a minor (2 minutes).
- B) A minor penalty will be of two minutes duration and will be called at the discretion of the referee for holding, illegal blocking, stalling, tripping, illegal use of the hands, and other minor fouls.
- C) A major penalty will be of five minutes duration, and will be called at the discretion of the referee for fighting and intentional roughness, deliberate and excessive insubordination and gross unsportsmanlike conduct.
- D) A major penalty calling for expulsion from the game will be called at the discretion of the referee for fighting with officials.
- E) If a penalized skater does not leave the track immediately or interferes with the remainder of the field he will receive an additional two minutes penalty time.
- F) In the event that six or more skaters of one team are competing on the track at the same time, a penalty will be called. The two leading skaters in scoring position on the penalized team must leave the track immediately with one of them drawing an automatic two minute penalty.
- G) If a skater's penalty time overlaps into the following period, ANY member of the opposite sex taking the track must serve out the balance of the penalty time. If the penalty time is over before the period time is over that skater must serve the time and cannot be replaced upon his return until that jam is over.
- H) No more than two players on any team can be in the penalty box at one time. If a third player or more is penalized, the player or players committing the penalty must leave the track and be replaced by a substitute. The penalized skater will begin serving his penalty time when one of the skaters in the penalty box returns to the track. At such time, the substitute will return to the bench.

RULE 6—BANISHMENT

- A) If any player accumulates a total of 12 minutes in penalties during any one game, he is automatically ruled out of the game and his substitute will spend the time of the last penalty in the penalty box.
- B) Any skater banished from the game for any reason may not return to the track for the balance of the game.
- C) In cases of a BANISHMENT PENALTY, on a rule out the substitute must sit five minutes in the penalty box before returning to the track.

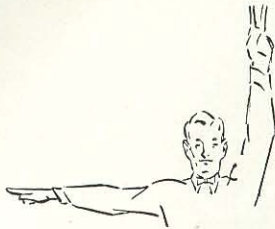
RULE 7—BLOCKING

- A) A player may block an opponent with any part of his body, with the following exceptions:
 - A) It is illegal to use any part of the arm BELOW the elbow.
 - B) It is illegal for a skater to block with his feet or trip an opponent.
 - C) In using arms for blocking purposes, the arm must be BENT.
 - D) Elbows may be used in blocking, but not in the following manner:
 - A skater is not permitted to use an elbow block above the shoulders.
 - A skater is not permitted to use an elbow with an upward or downward movement.
 - A skater is not permitted to use an elbow with a backward motion.
 - E) In setting up a DOUBLE block, it is illegal for the defensive skaters to lock arms. Both blockers may receive a penalty at the discretion of the referee.

REFeree's SIGNALS



NO SCORE



POINTS SCORED



JAM CALLED OFF



JAM OFF —
SKATER INTO INFIELD



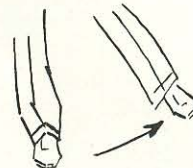
DELAYING GAME



SLUGGING



KNEEING



TRIPPING



INSUBORDINATION



PUSHING



HOLDING



UNNECESSARY ROUGHNESS



ILLEGAL BLOCKING

What's new in Roller Derby?

Who's the leading scorer?

Who's the newest star?

These and all the other inside stories of Roller Derby are brought to you every other week in Roller Derby News . . . the official publication of the National Roller Derby League. Columns by Ken Nydell and Larry Richards . . . behind the scenes interviews . . . these are only some of the many features of Roller Derby News. Subscribe today . . . only \$2.00 for one year's subscription. Have Roller Derby News mailed to your home. Fill out the subscription blank. Mail it now!

Sign on Dotted Line for Subscription...



Please enter my name for a one year subscription (26 issues) to ROLLER DERBY NEWS, the official publication of the National Roller Derby League. Enclosed find two dollars to cover the cost of my subscription.

NAME (please print)

ADDRESS

CITYZONE No....STATE.....

Send all subscriptions to Roller Derby News, Rm. 205,
Madison Square Garden, New York 19, N. Y.

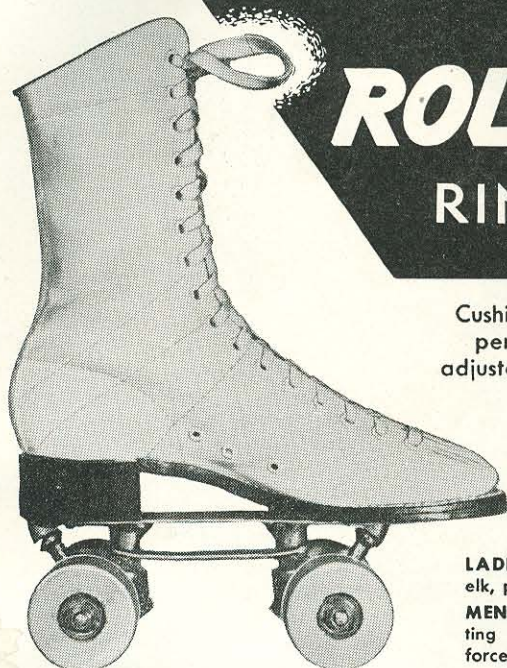


THE TOPS!

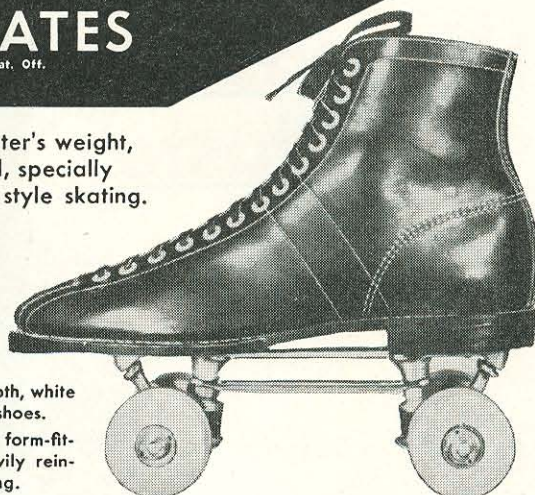


OFFICIAL ROLLER DERBY RINK SKATES

Trade Mark Reg. U.S. Pat. Off.



Cushioned to the skater's weight,
perfectly balanced, specially
adjustable to fit any style skating.



LADIES'—Selected smooth, white
elk, professional model shoes.

MEN'S—Selected soft form-fit-
ting black elk . . . heavily rein-
forced with duck webbing.

TOP PERFORMERS USE ROLLER DERBY SKATES EXCLUSIVELY!



MIDGE BRASUHN

The stars shown here are among the hundreds of top-ranking performers who use Official Roller Derby Rink Skates exclusively. . . . In more than 15 years of Roller Derby competition, these skates have proven themselves for speed, endurance, comfort and long life!



BILLY BOGASH



KEN MONTE

On Sale at all Leading Department and Sporting Goods Stores

ROLLER DERBY SKATE COMPANY

Sales Office:
1513 South Wabash
Chicago 5, Ill.

Factory:
4533 Payne
Cleveland 3, Ohio



ANNIS JENSEN



GERRY MURRAY



SID HARNESEK



MARY GARDNER



SAM SKOBEL

YOUR PROGRAM IS No 352086

THE BIGGEST
"PLUS"
IN CIGARETTE HISTORY

**"No
Unpleasant
After-taste"**

—added to the world's
most famous ABCs—

Always Milder
Better Tasting
Cooler Smoking



"The Big Plus is a hit with me—" *Gloria DeHaven*

"CHESTERFIELD IS THE ONLY CIGARETTE of all
brands tested in which members of our taste
panel found no unpleasant after-taste."

From the report of a well-known research organization

Always **B**uy **C**CHESTERFIELD

Copyright 1951, LIGGETT & MYERS TOBACCO CO.

See **GLORIA DeHAVEN** starring in **"FRIENDLY ISLAND"**
A 20th Century-Fox Production-Color by Technicolor